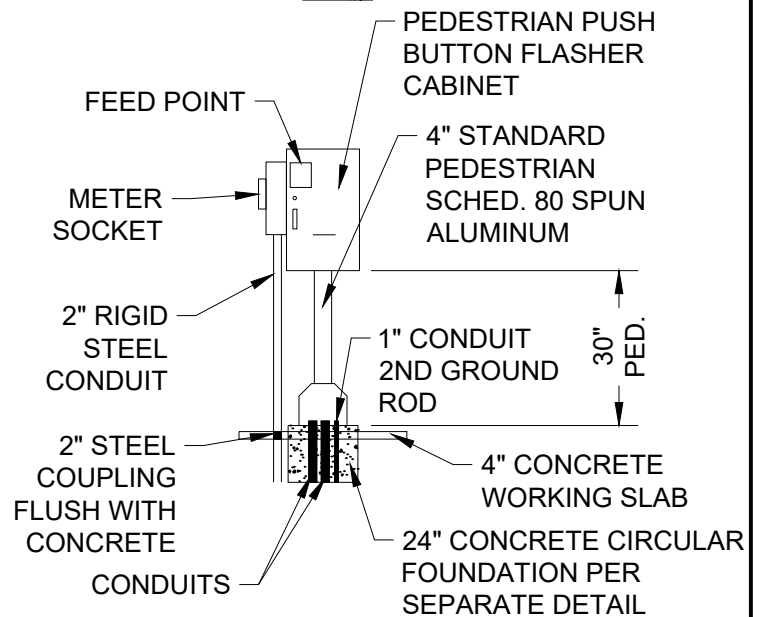
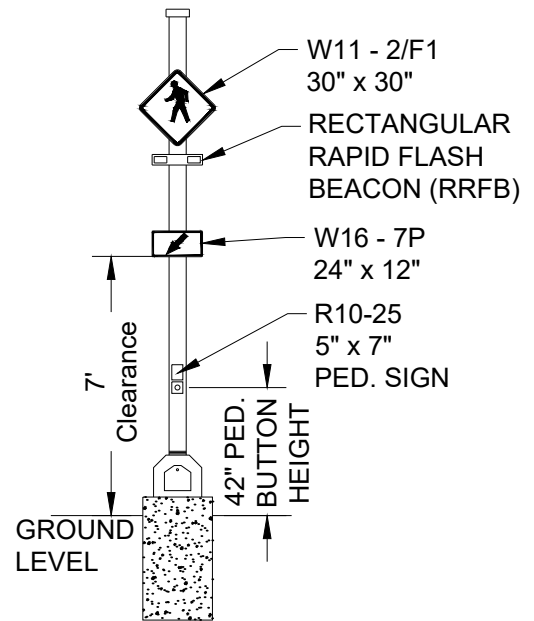


## NOTES:

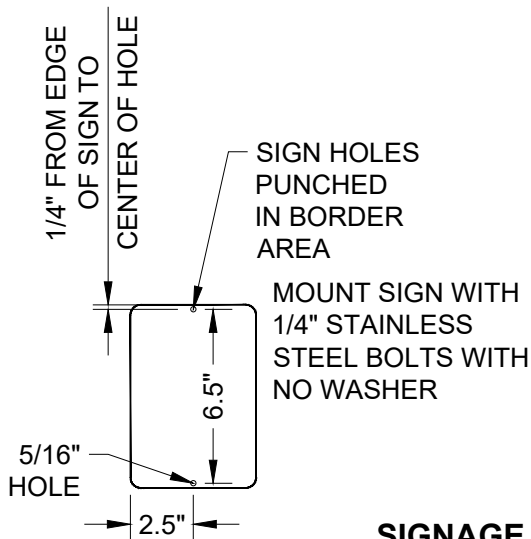
1. DRILL, TAP AND DYE THE POLE AND INSTALL SIGNS WITH A 3/8" x 1" STAINLESS STEEL HEX BOLT USING A 3/8" STAINLESS STEEL FLAT WASHER AND A NYLON WASHER.
2. RUN NO. 12 AWG 2 CONDUCTOR FROM EACH HEAD TO THE TERMINAL BLOCK INSIDE THE T-BASE.
3. INSTALL A NO. 12 AWG 5 CONDUCTOR FROM EACH PEDESTRIAN FLASHER TERMINAL BLOCK TO THE FLASHER CABINET CONNECTIONS.
4. ALL CENTER MEDIAN ISLAND TYPE V FLASHERS SHALL HAVE 2 LED RRFB'S AND 2 PEDESTRIAN SIGNS ON TYPE V POLE, ONE SET FACING EACH DIRECTION OF TRAFFIC.
5. INSTALL A NO. 12 AWG 2 CONDUCTOR FROM PEDESTRIAN PUSH BUTTON TO THE FLASHER CABINET CONNECTIONS.

## CABINET NOTES:

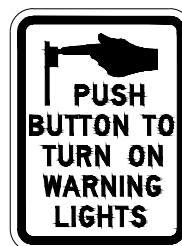
1. CABINET SHALL BE A PUSH BUTTON ACTIVATED FLASHER CABINET W/ HOA SWITCH, WITH A FLASHING CIRCUIT PANEL, A GENERAL PURPOSE RELAY, FLASHER RELAY AND MULTIFUNCTION TIME DELAY RELAY.
2. CABINET SHALL HAVE ITS OWN 15 AMP CIRCUIT BREAKER.



## PEDESTAL MOUNTED CABINET



## SIGNAGE



R10-25  
5" x 7"  
PED. SIGN

City Plate No.:

TRA-7B

Last Revision:

12/18/2020

Section:

3800

## STANDARD DETAILS

## TYPE 'V' PEDESTRIAN FLASHER

**City of Minot**