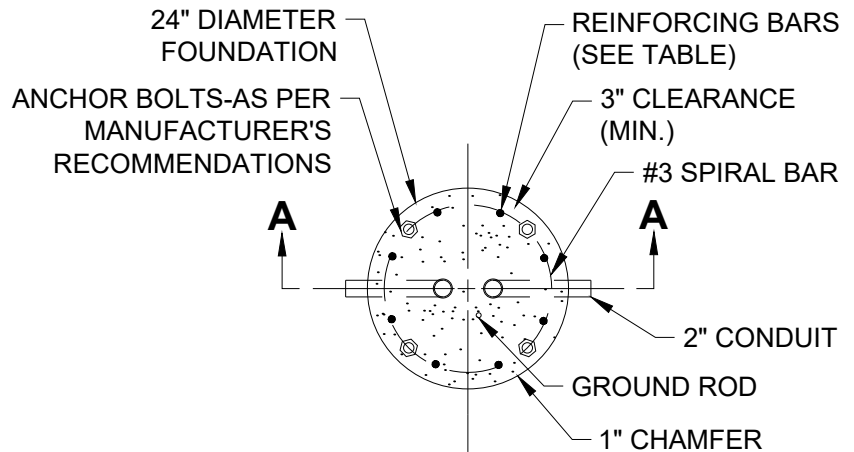


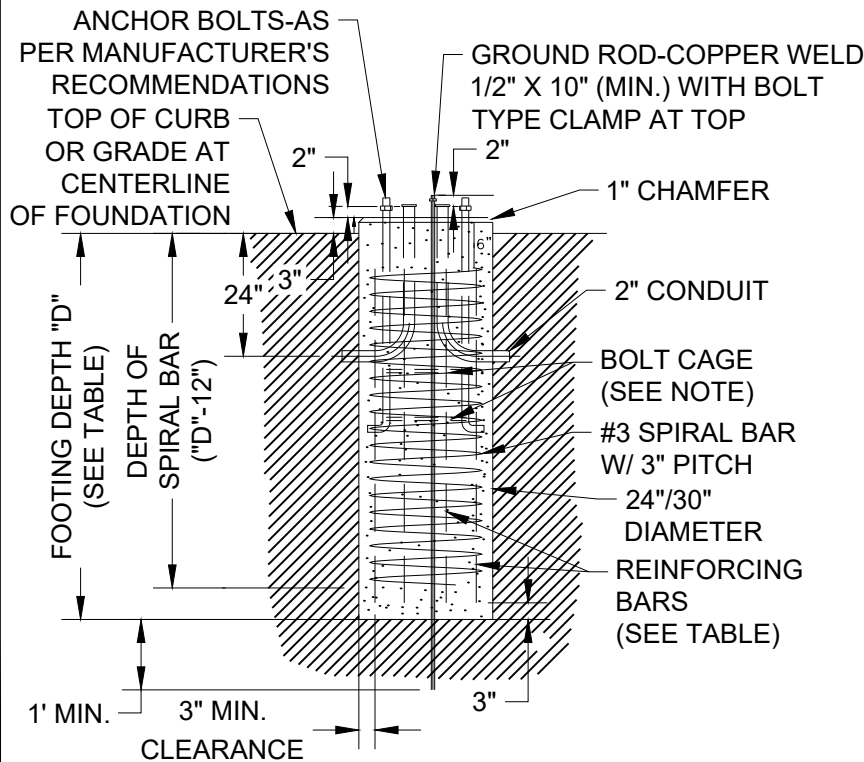
NOTES:

1. CONCRETE USED IN THE WORK SHALL BE CLASS AE PORTLAND CEMENT CONCRETE MIXED AND PROPORTIONED AS SPECIFIED IN NDDOT STANDARD SPECIFICATIONS SECTION 802.
2. THE TOP OF THE FOUNDATION SHALL BE CIRCULAR.
3. NO REINFORCEMENT IS REQUIRED IF THE ANCHOR BOLTS EXTEND TO WITHIN 3" TO 6" ABOVE THE BOTTOM OF THE FOUNDATION.
4. ALL REINFORCING STEEL TO BE GRADE 40 OR 60.
5. SEE PLANS FOR CONDUIT SIZE, NUMBER OF BENDS AND CORRECT POSITIONING FOR EACH FOUNDATION.
6. WHEN CONDUIT DOES NOT CONTINUE BEYOND THE FOUNDATION, CONDUIT WITH A 105° BEND AND BUSHINGS ON BOTH ENDS MAY BE SUBSTITUTED FOR THE 90° BENDS SHOWN.
7. SEE PLANS FOR CORRECT LOCATION OF FOUNDATIONS. THE GRADE AND EXACT LOCATION SHALL BE ESTABLISHED BY THE ENGINEER IN THE FIELD.
8. MAXIMUM BOLT CIRCLE FOR THE 24" FOUNDATION SHALL NOT EXCEED 18".

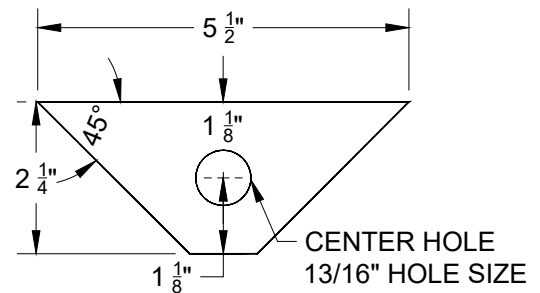
TRAFFIC SIGNAL STANDARD FOUNDATION SELECTION TABLE		
DESCRIPTION	24" DIA. REINFORCING BARS REQUIRED	24" DIA. FOOTING DEPTH "D"
TYPE V PED. FLASHER	4 - #5 ①	4'



PLAN



SECTION A-A



NOTES:

1. CUT FROM 1/4" WIDE GALVANIZED STEEL.
2. THIS PLATE SHALL BE INSTALLED BETWEEN THE BASE AND THE ANCHOR BOLT NUT IN ALL 4" TYPE V SIGNAL STANDARD BASES.

**4" SIGNAL STANDARD
BASE ANCHOR BOLT PLATE**

M:\STANDARD SPECS & DETAILS\2025\Details\TRA-7A_Type V Pedestrian Flasher Foundation.dwg

City Plate No.:

TRA-7A

Last Revision:

12/18/2020

Section:

3800

STANDARD DETAILS

**TYPE 'V' PEDESTRIAN
FLASHER FOUNDATION**

City of Minot