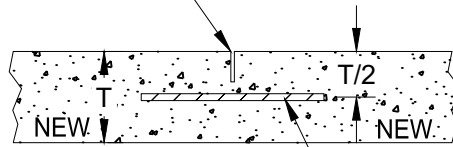


SAW CUT AND SEALANT

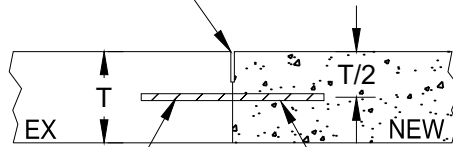
REFER TO STR-17B FOR NOTES.



TIE BAR & SUPPORT

### **SECTION A-A LONGITUDINAL JOINT - NEW TO NEW**

SAW CUT AND SEALANT



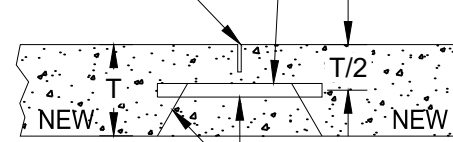
ADHERED WITH EPOXY ADHESIVE

TIE BAR

### **SECTION A-A LONGITUDINAL JOINT - NEW TO EX**

SAW CUT AND SEALANT

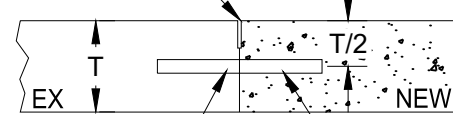
BAR COATED WITH APPROVED  
RELEASING AGENT



DOWEL BAR & SUPPORT

### **SECTION B-B TRANSVERSE JOINT - NEW TO NEW**

SAW CUT AND SEALANT

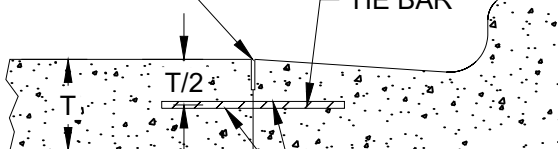


ADHERED WITH EPOXY ADHESIVE

DOWEL BAR WITH APPROVED  
RELEASING AGENT

### **SECTION B-B TRANSVERSE JOINT - NEW TO EX**

SAW CUT AND SEALANT



TIE BAR

ADHERE INTO EX CONC WITH EPOXY  
ADHESIVE WHERE APPLICABLE

### **SECTION C-C CURB AND GUTTER JOINT**

City Plate No.:

STR-17C

Last Revision:

12/18/2020

Section:

3110

**STANDARD DETAILS**  
**CONCRETE PAVEMENT REPAIR**

**City of Minot**