

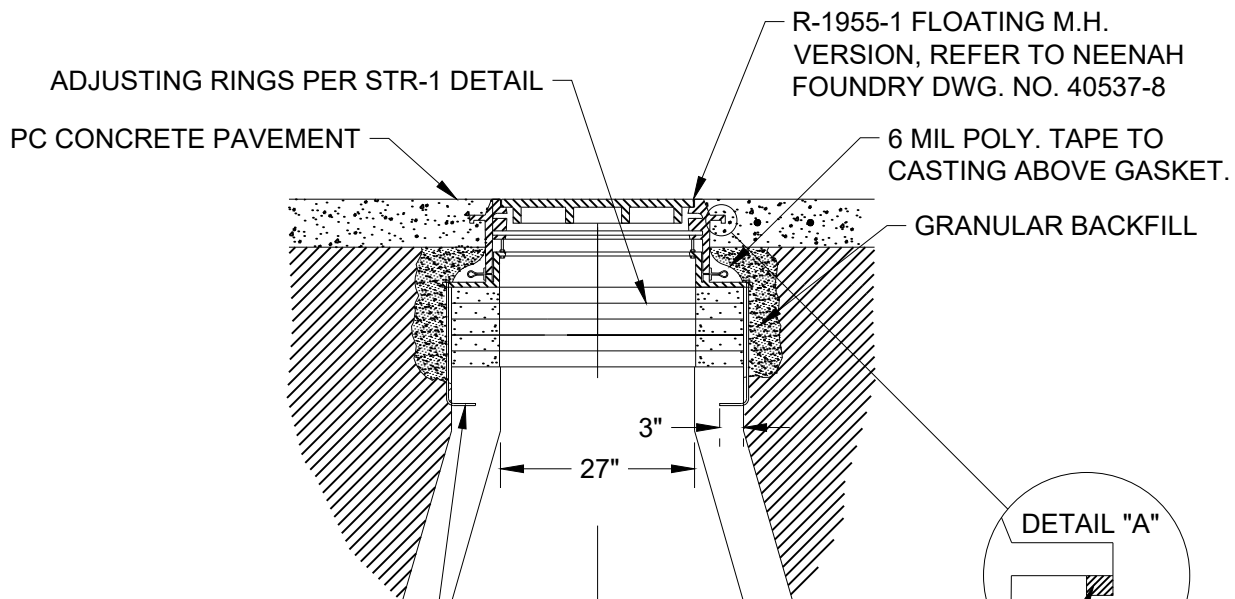
MANHOLE CASTING  
PLACED ON JOINT  
(SEE DETAIL "A")

TRANSVERSE JOINT

MANHOLE CASTING  
(MID-SLAB)

CASTING SHALL BE  
ROTATED AND PLACED  
AS SHOWN

LONGITUDINAL  
JOINT



3/4" DIA. S.S ANCHOR BOLTS  
W/ NUTS, TO EXTEND 5" BELOW  
ADJUSTING RINGS, 4 PER  
CASTING, LENGTH TO VARY WITH  
NUMBER OF ADJUSTING RINGS

# **FLOATING MANHOLE** NEENAH FOUNDRY TYPE

## **NOTES:**

1. THIS DETAIL APPLIES TO ALL MH'S LOCATED WITHIN THE CONCRETE PAVING SECTION.
2. CASTING IS INCIDENTAL TO MANHOLE.

WHEN CASTING IS  
PLACED ON TRANSVERSE  
JOINTS, REMOVE ALL (4)  
HOOK PORTIONS FROM  
THE FLANGES AND COAT  
OUTER SURFACE OF  
CASTING W/ APPROVED  
RELEASING AGENT.

City Plate No.:

STR-16

Last Revision:

12/18/2020

Section:

3100

## **STANDARD DETAILS**

### **FLOATING MANHOLE CASTING**

**City of Minot**