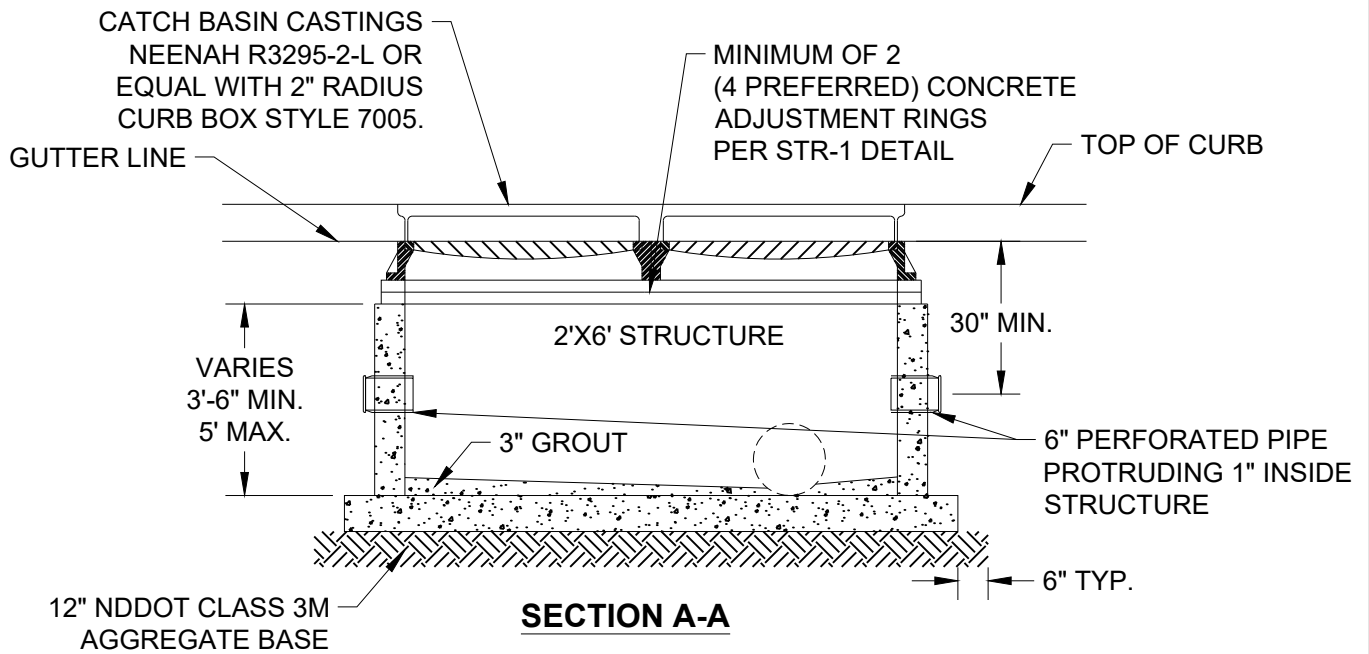


NOTE:

NO CONCRETE BEHIND OR ON TOP OF CATCH BASIN CASTING.

PLAN



SECTION A-A

NOTES:

1. DOGHOUSES SHALL BE GROUTED ON BOTH THE INSIDE AND OUTSIDE.
2. PRECAST CONCRETE SECTIONS ONLY. NO BLOCK STRUCTURES ALLOWED.
3. CATCH BASIN MANHOLE IF BUILD IS GREATER THAN 5' OR IF REQUIRED TO ACCOMMODATE OUTLET PIPE SIZE/ALIGNMENT.
4. AT SAG LOCATIONS, CATCH BASIN RIM TO BE DEPRESSED 1" BELOW DESIGN GUTTER LINE GRADE.
5. 4" VERTICAL HOOD OPENING MAX.
6. DRAIN TILE HOLES TO BE PRECAST OR CORE DRILLED.
7. WHEN DRAIN TILE LOCATION CONFLICTS WITH OTHER PIPE CONNECTIONS, CORE DRILL HOLES IN THE FIELD ELSEWHERE IN THE CATCH BASIN. FLOW MUST BE MAINTAINED.

City Plate No.:

STO-7

Last Revision:

12/18/2020

Section:

2700

STANDARD DETAILS

**DOUBLE CATCH BASIN
CURB & GUTTER INSTALLATION**

City of Minot