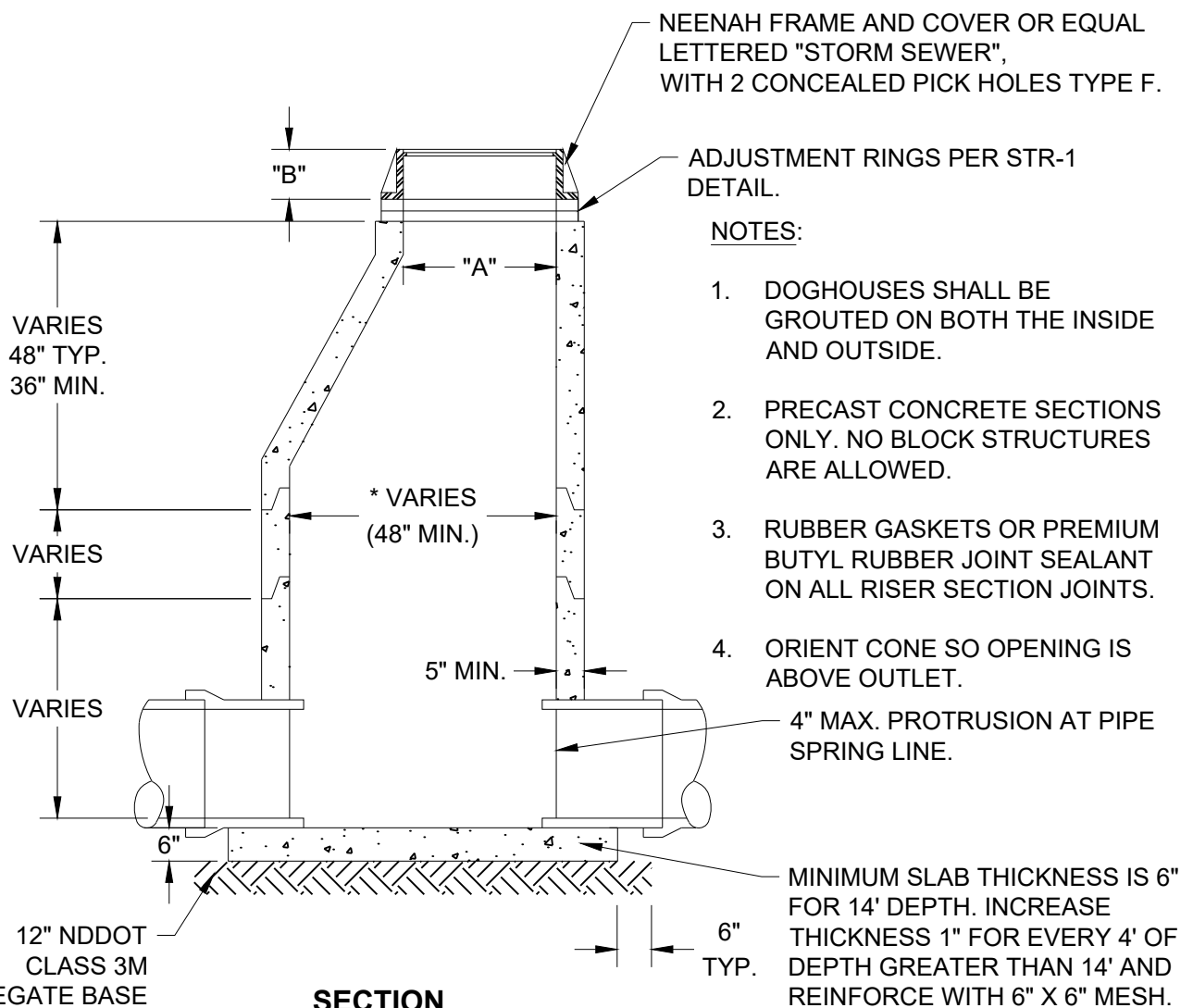


CASTING	LID TYPE	A	B
1642	B	27"	7"

PLAN



NOTES:

1. DOGHOUSES SHALL BE GROUTED ON BOTH THE INSIDE AND OUTSIDE.
2. PRECAST CONCRETE SECTIONS ONLY. NO BLOCK STRUCTURES ARE ALLOWED.
3. RUBBER GASKETS OR PREMIUM BUTYL RUBBER JOINT SEALANT ON ALL RISER SECTION JOINTS.
4. ORIENT CONE SO OPENING IS ABOVE OUTLET.

SECTION

*DETERMINED BY PIPE

City Plate No.:

STO-1

Last Revision:

12/18/2020

Section:

2700

STANDARD DETAILS

STORM SEWER MANHOLE

City of Minot