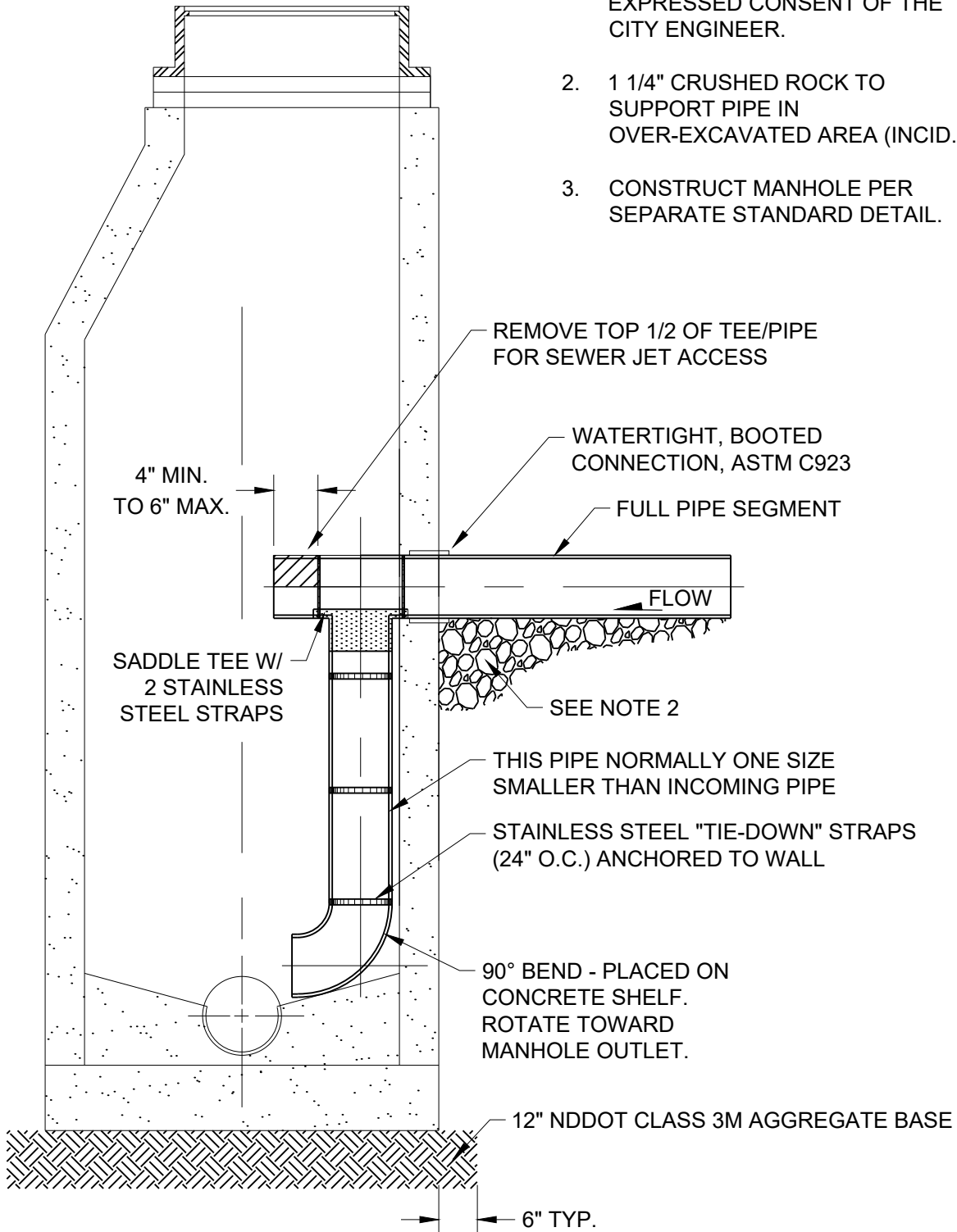


# NOTES:

1. THE INTERIOR DROP CONNECTION AS SHOWN WILL ONLY BE USED WITH THE EXPRESSED CONSENT OF THE CITY ENGINEER.
2. 1 1/4" CRUSHED ROCK TO SUPPORT PIPE IN OVER-EXCAVATED AREA (INCID.)
3. CONSTRUCT MANHOLE PER SEPARATE STANDARD DETAIL.



M:\STANDARD SPECS & DETAILS\2025\Details\SAN-4 - SANITARY SEWER INSIDE DROP CONNECTION.dwg

City Plate No.:	SAN-4
Last Revision:	12/18/2020
Section:	2300

## STANDARD DETAILS

### SANITARY SEWER INSIDE DROP CONNECTION

**City of Minot**