

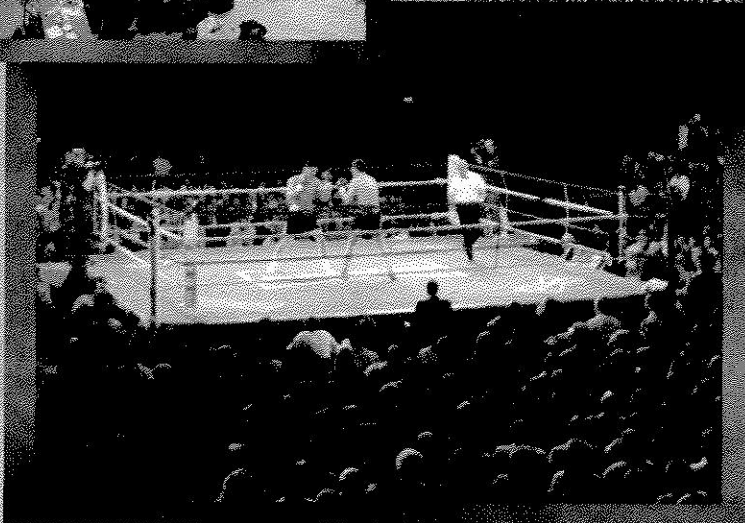
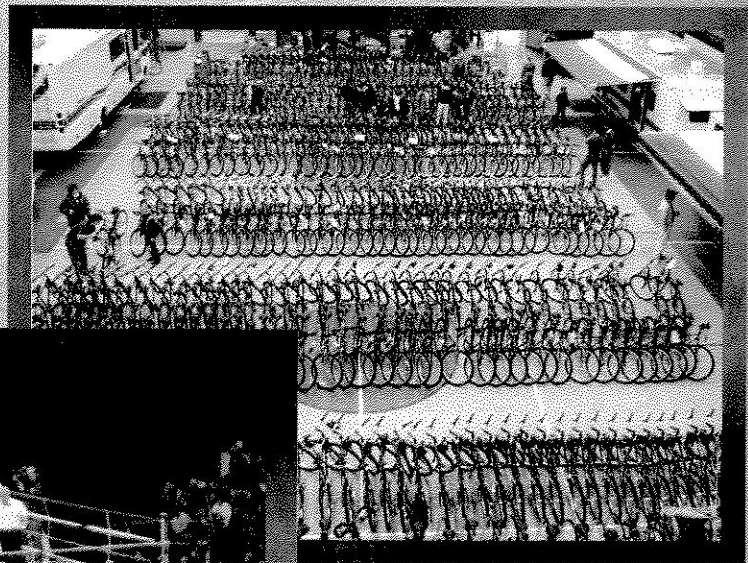
Minot Municipal Auditorium



**Sporting
Events**

**Concerts
Trade Shows**

**Meetings
Conventions
and more!**



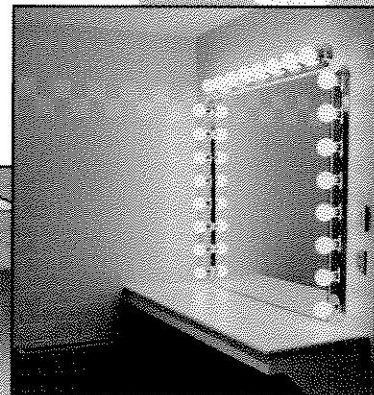
*“Better
than ever.”*



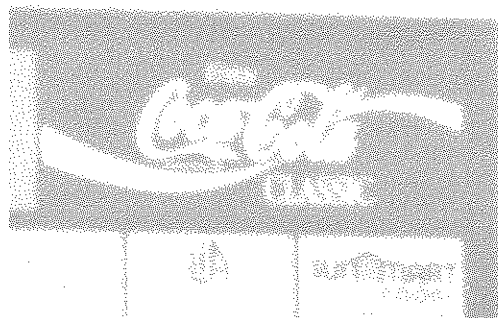
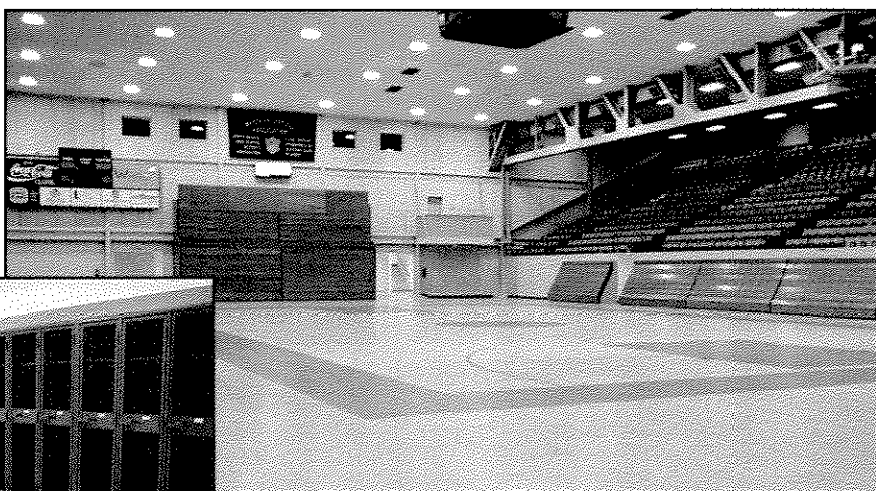
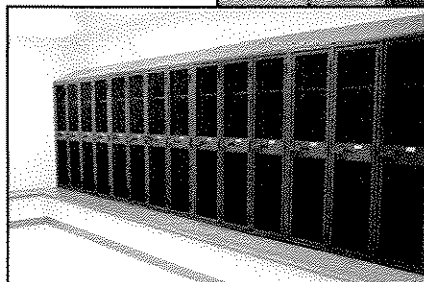
Room 301 provides a convenient setting for meetings and banquets. Banquet style seating comfortably seats 160 people. The room features two stoves, two refrigerators, and plenty of counter space. Room 201 is also available for banquets or meetings and can seat up to 275 people banquet style.

To complete the setting, rooms 108, 201, and 301 all offer built-in sound systems.

Room 109B, the VIP Suite, provides complete comfort with sofas, a bathroom, a shower and dressing area, and access to the stage. Room 109A, adjoining room 109B, serves as a VIP meeting room.

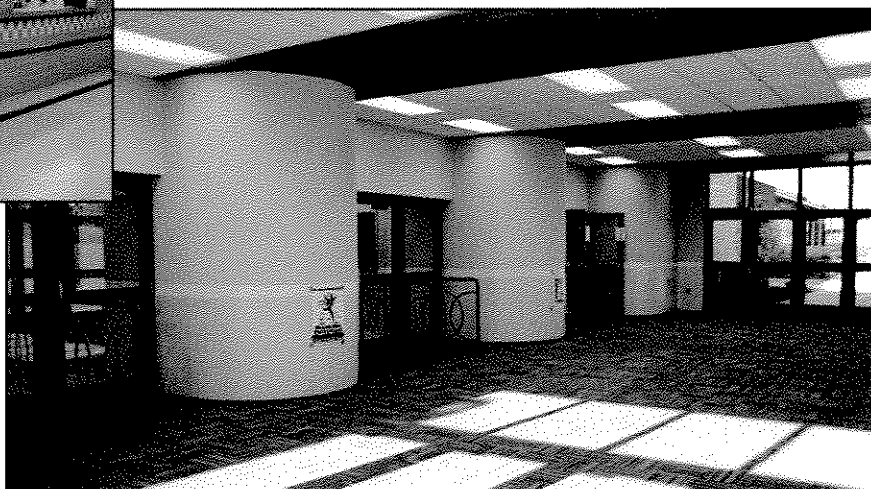


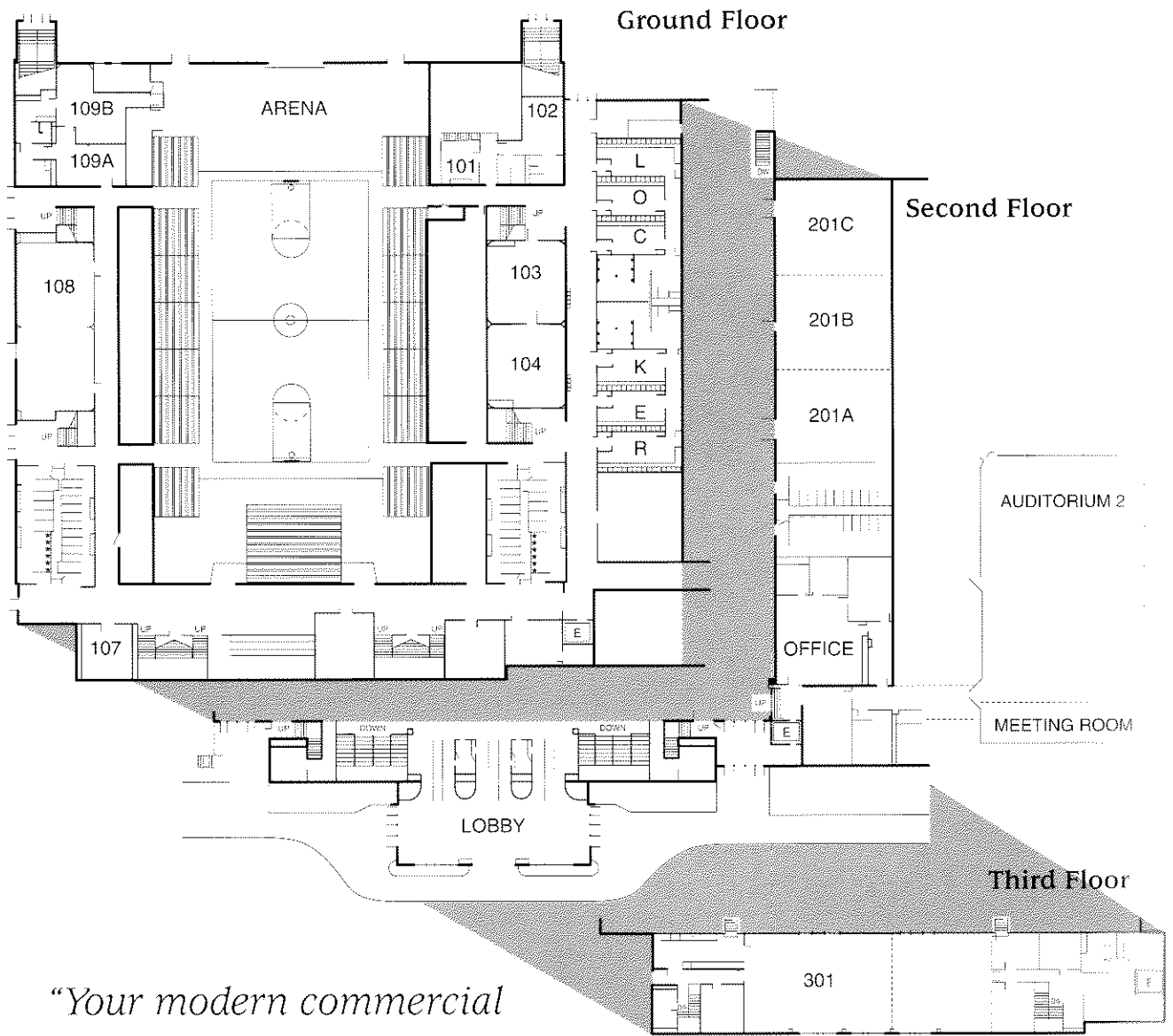
Six locker rooms with showers provide a great facility for tournaments and other sporting events.



This modern facility is completely handicap accessible.

The Minot Municipal Auditorium is easily accessible for attending trade shows, athletic events and other activities. It's just off Burdick Expressway and one block off of Broadway. ☼ The professional auditorium staff is available for set-up, take down, last minute changes, or pre-planning sessions. They will prepare the facility the way you want it. Just ask. ☼ The sound system provides quality sound for any event. From floor seats to the top row of the balconies, the sound is clean and sharp. The entire system is computer designed with acoustically matched speakers to provide the best sound reinforcement in the state of North Dakota. ☼ The auditorium will provide the audio and video equipment needed to make meetings and conventions complete. Overhead projectors, projector stands, screens, TVs, and VCRs are available.





*"Your modern commercial
and recreational facility."*

Room	Dimensions	Sq. Feet	Capacity/ Seating
Main Arena	80' x 165'	13,200	5,000
103	24' x 28'	672	80
104	24' x 28'	672	80
107			32
108	24' x 57'	1,368	160
109			30
Locker Rooms 1-6			15
201A	24' x 28'	672	100
201B	24' x 28'	672	100
201C	24' x 28'	672	100
201 A, B, & C	24' x 84'	2,016	300
Auditorium II	70' x 100'	7,000	600
203 (Auditorium II)	28' x 34'	952	110
301 West			100
301 East			60
301 East & West			160

Capacities are based on chairs set theater style with ample space allowed for a head table and lectern.

For More Information:

420 3rd Avenue Southwest • P.O. Box 684
Minot, North Dakota 58702
Phone 701.857.4730 • Fax 701.857.4799

