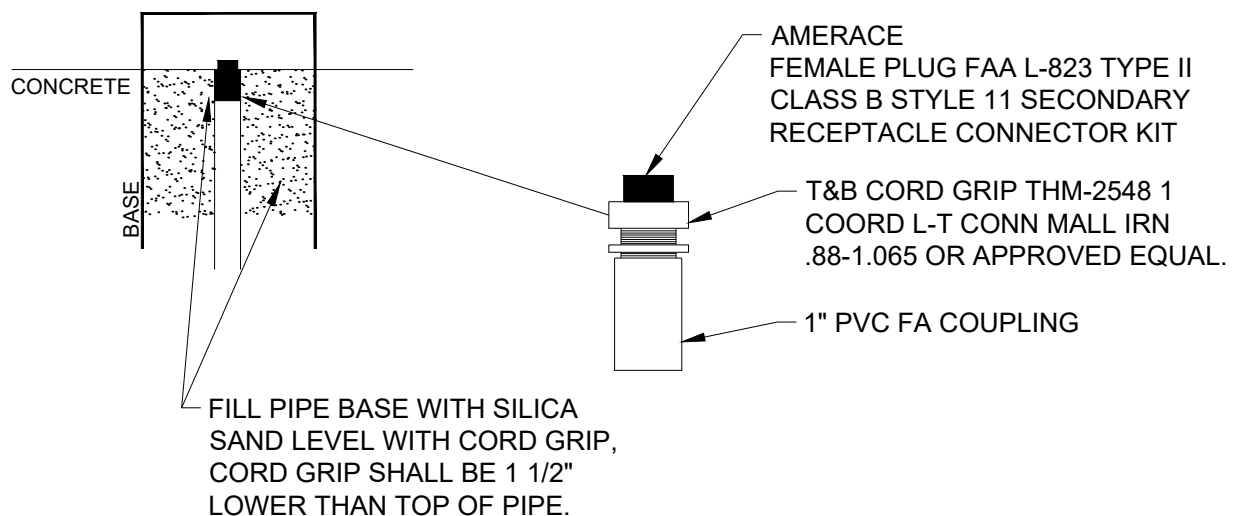
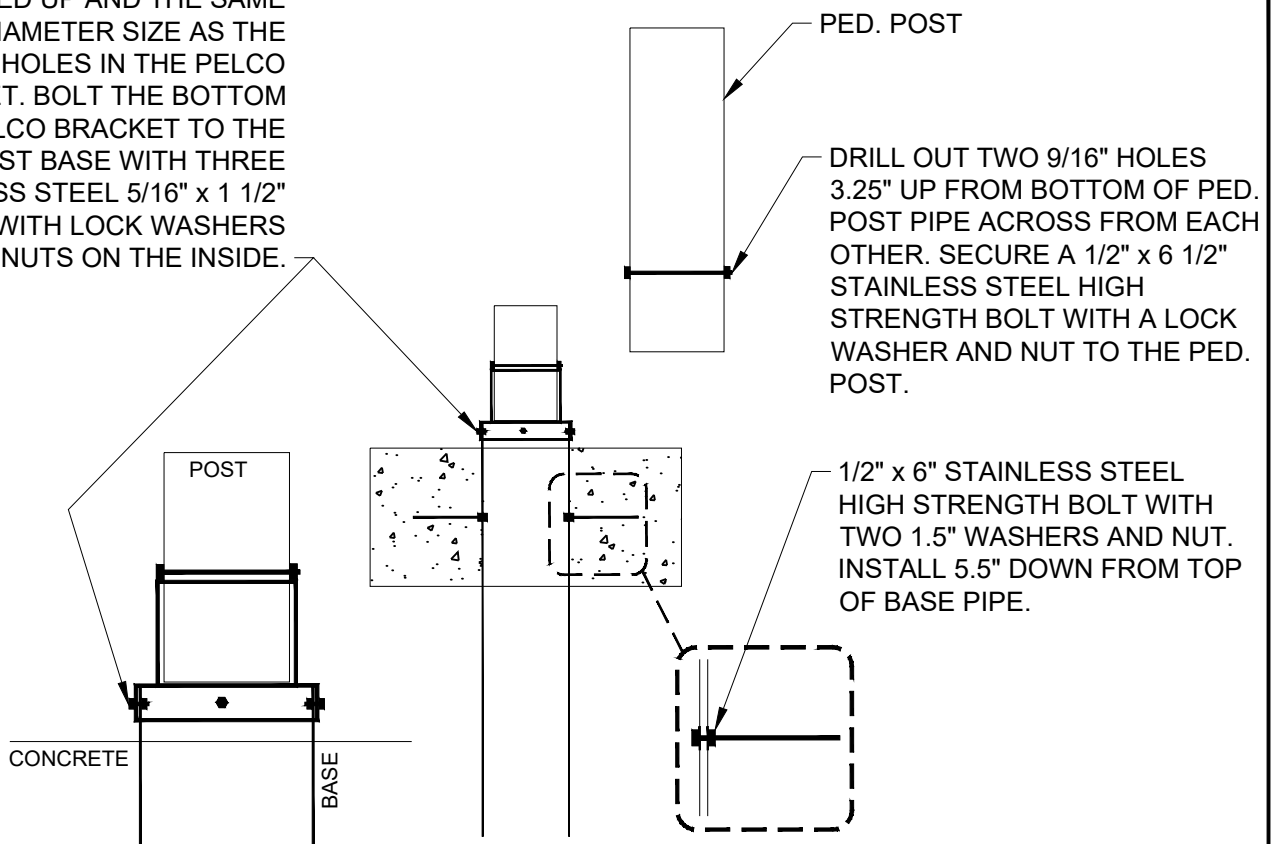


PELCO PB-5325 THREE PIECE
POLE & BASE COLLAR
ASSEMBLY. DRILL OUT 3 HOLES
IN THE PED. POLE BASE THAT
ARE LINED UP AND THE SAME
DIAMETER SIZE AS THE
FACTORY HOLES IN THE PELCO
BRACKET. BOLT THE BOTTOM
OF THE PELCO BRACKET TO THE
PED. POST BASE WITH THREE
STAINLESS STEEL 5/16" x 1 1/2"
BOLTS WITH LOCK WASHERS
AND NUTS ON THE INSIDE.



M:\STANDARD SPECS & DETAILS\2026 Standard Details\Combined\TRA-6A_PED-PEDESTRIAN PUSH BUTTON POST AT BASE.dwg

City Plate No.:

TRA-6A

Last Revision:

12/18/2020

Section:

3800

STANDARD DETAILS

PEDESTRIAN PUSH BUTTON POST AT BASE

City of Minot