



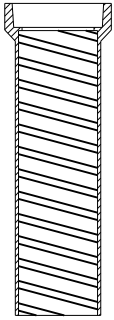
DROP LID



TYLER NO. 6860
MUELLER NO. H-10361

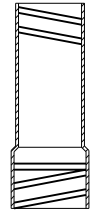


DROP-IN RISER - 2"



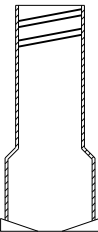
TOP

TYLER NO. 6860 26"



EXTENSION

TYLER NO. 58 14"
NO. 59 18"
NO. 60 24"



BOTTOM

TYLER NO. 6860 65"

BASE

BUTTERFLY VALVE ADAPTOR

NDDOT
CLASS 3M
AGGREGATE

8" CONCRETE BLOCK

8.5' MINIMUM COVER REQUIRED
OVER TOP OF WATER MAIN.

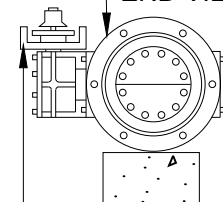
1/4" TO 3/8"

TYLER NO. 6860 OR
APPROVED EQUAL GATE
VALVE BOX, SCREW TYPE, 3
PIECE, 5 1/4" SHAFT, SIZE G
BOX, 8'-6" EXTENDED.

WRAP GATE VALVE & BOX
WITH POLYETHYLENE PIPE
ENCASEMENT MATERIAL

BUTTERFLY VALVE
(18" OR LARGER)
CONFORMING TO
AWWA C504

END VIEW



BUTTERFLY VALVE
ADAPTOR

City Plate No.:

WAT-4

Last Revision:

12/2/2025

Section:

2100

STANDARD DETAILS

BUTTERFLY VALVE AND BOX INSTALLATION

City of Minot