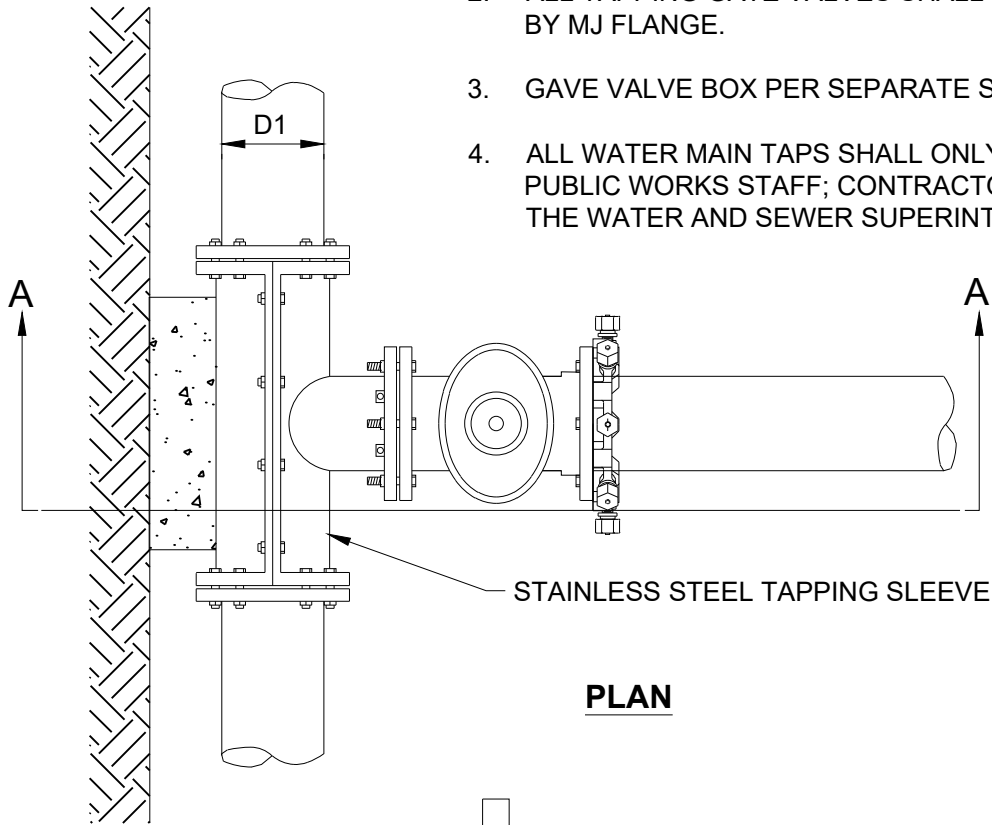
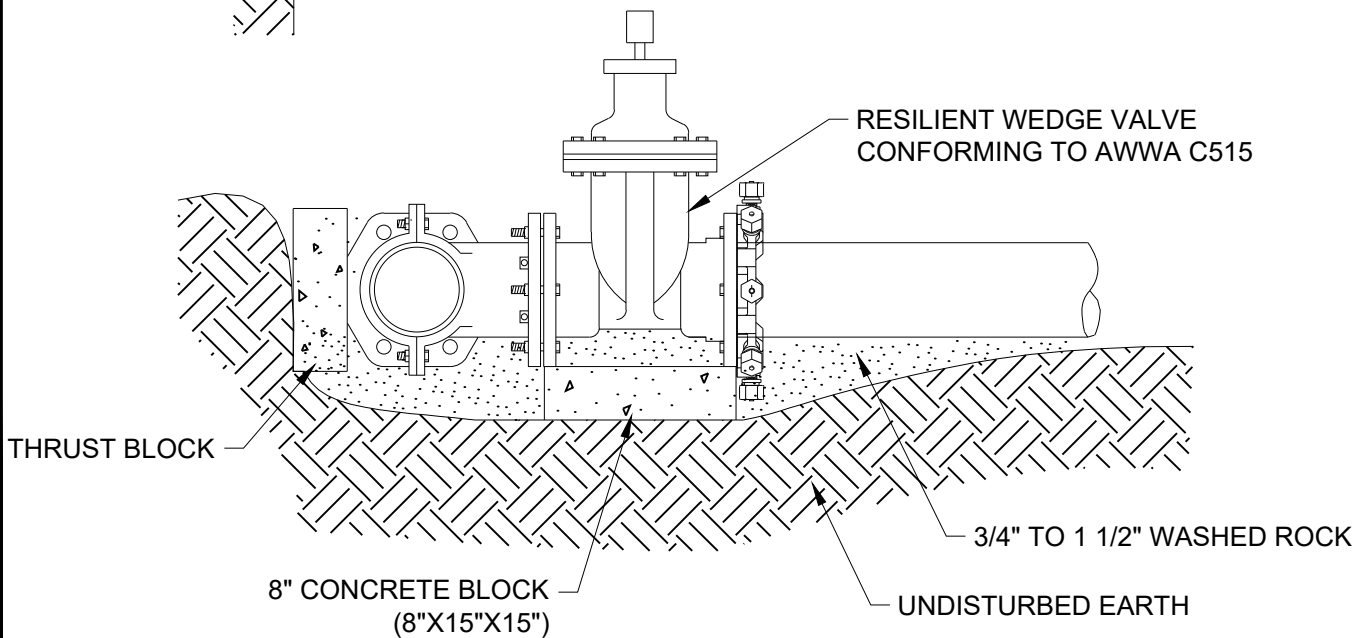


**NOTES:**

1. 8.5' MINIMUM COVER REQUIRED OVER TOP OF WATER MAIN.
2. ALL TAPPING GATE VALVES SHALL BE STRAIGHT FLANGE BY MJ FLANGE.
3. GAVE VALVE BOX PER SEPARATE STANDARD DETAIL.
4. ALL WATER MAIN TAPS SHALL ONLY BE OPERATED BY PUBLIC WORKS STAFF; CONTRACTOR MUST CONTACT THE WATER AND SEWER SUPERINTENDENT.



**PLAN**



**SECTION A-A**

M:\STANDARD SPECS & DETAILS\2026 Standard Details\Combined\WAT-5 - WATERMAIN WET TAP.dwg

City Plate No.:

WAT-5

Last Revision:

12/18/2025

Section:

2100

**STANDARD DETAILS**

**WATER MAIN  
WET TAP**

**City of Minot**