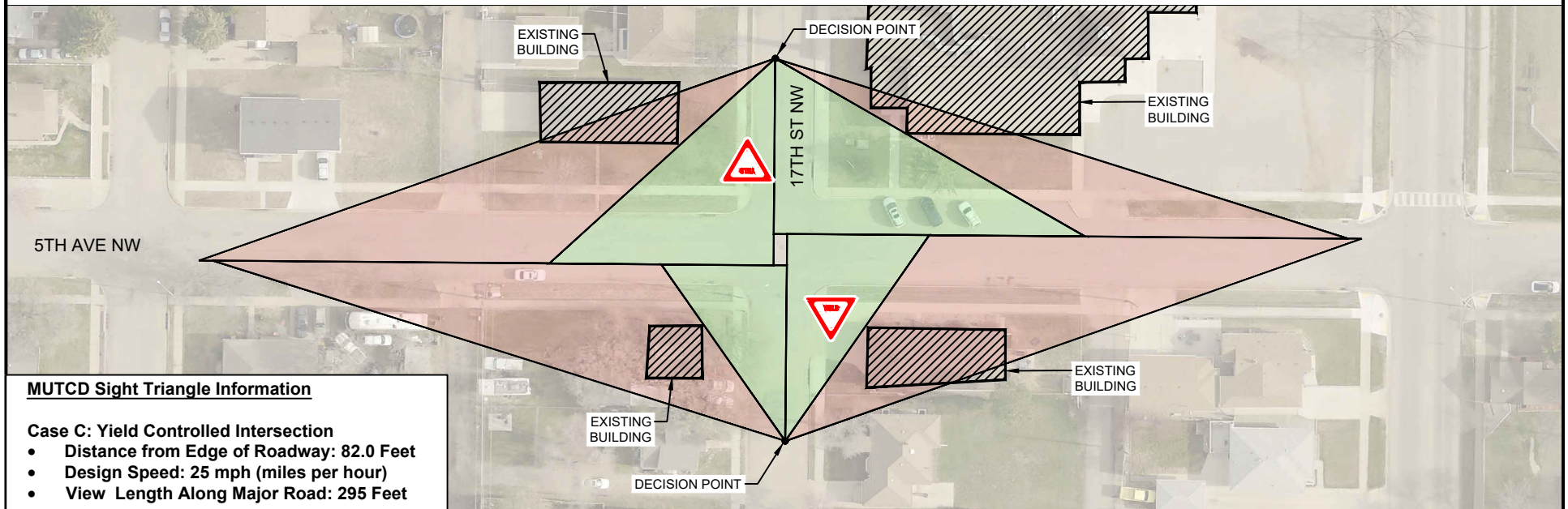
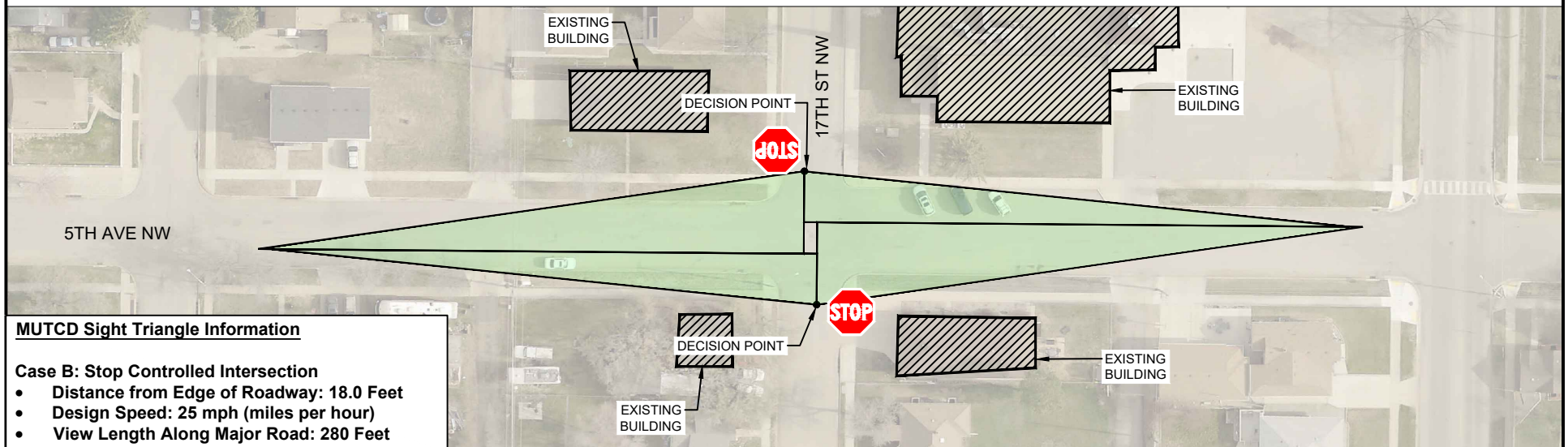


CONDITION: APPROACH YIELD CONTROL



CONDITION: DEPARTURE STOP CONTROL



Legend

- Sight Triangle Obstructed View
- Sight Triangle Available View

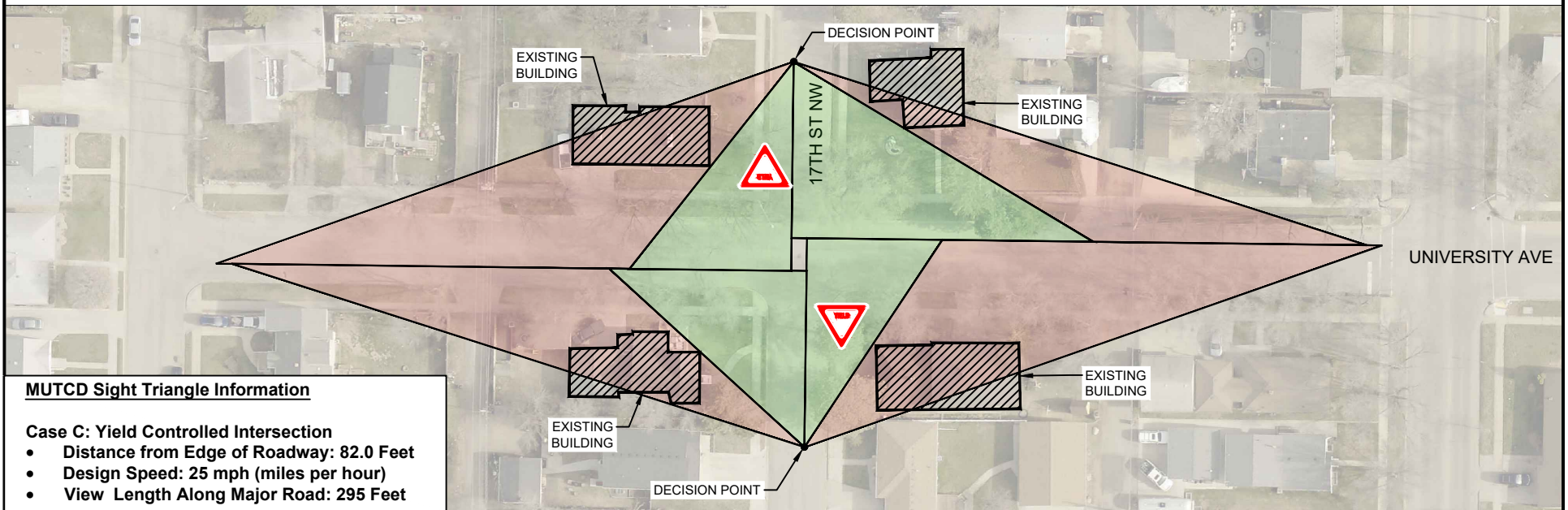
DEPARTURE SIGHT TRIANGLE FOR YIELD AND STOP CONDITIONS

17TH ST NW @ 5TH AVE NW

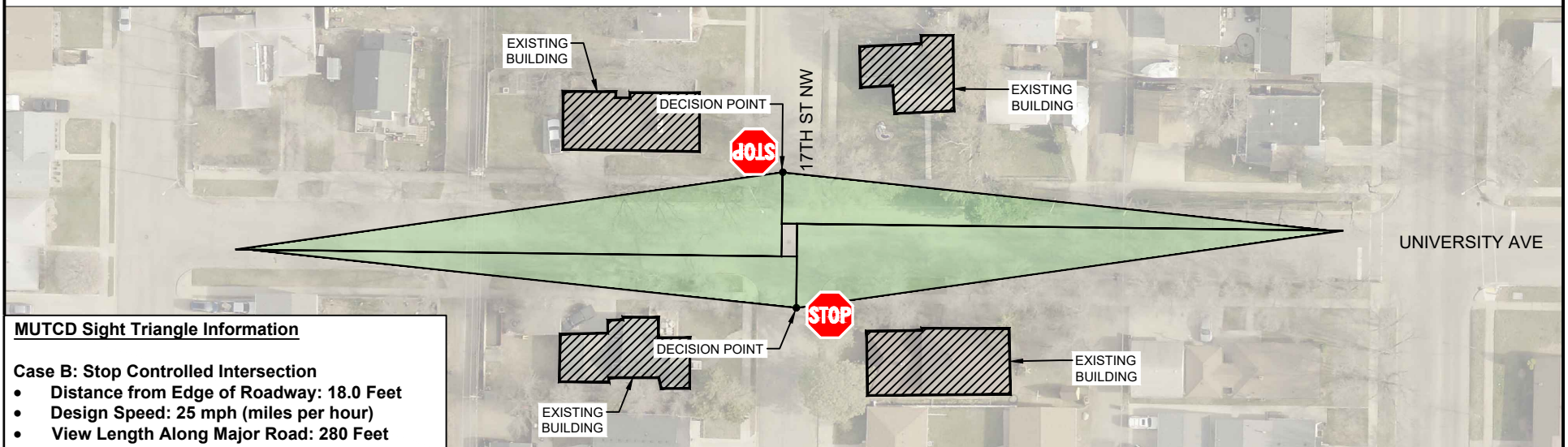
DATE DRAWN: 01/30/2024

City of Minot

CONDITION: APPROACH YIELD CONTROL



CONDITION: DEPARTURE STOP CONTROL



Legend

- Sight Triangle Obstructed View
- Sight Triangle Available View

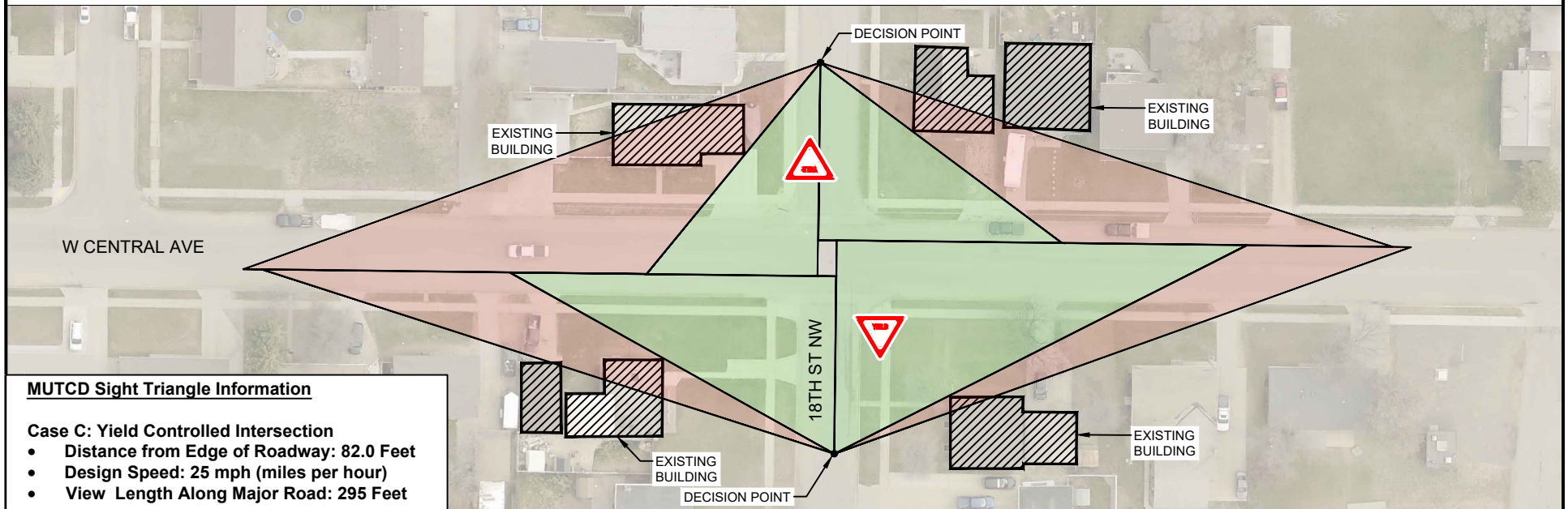
**DEPARTURE SIGHT TRIANGLE
FOR YIELD AND STOP CONDITIONS**

17TH ST NW @ UNIVERSITY AVE

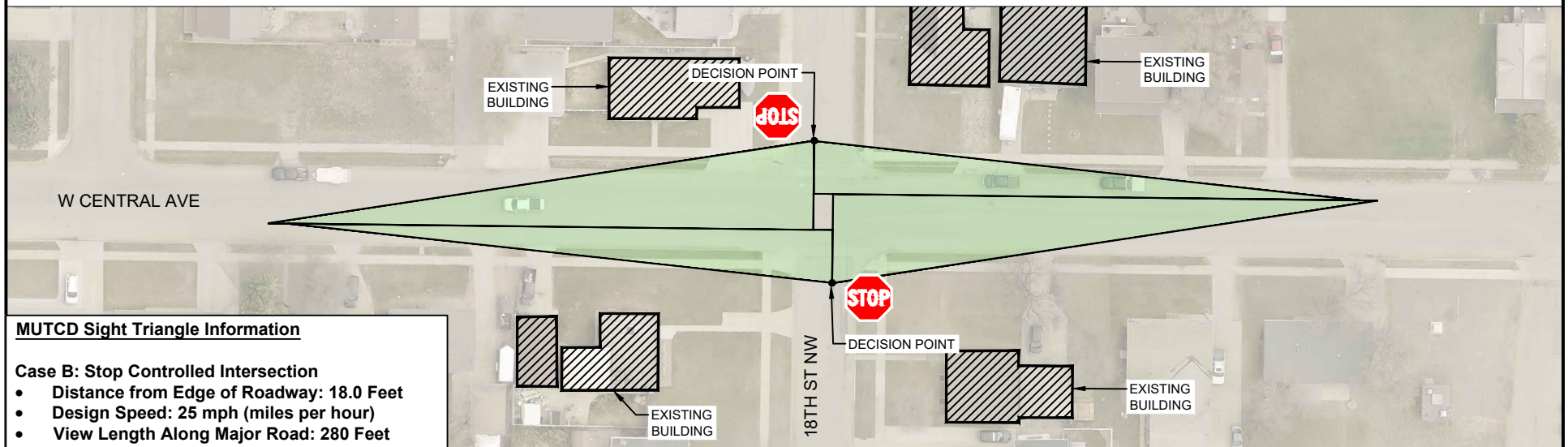
DATE DRAWN: 01/30/2024

City of Minot

CONDITION: APPROACH YIELD CONTROL



CONDITION: DEPARTURE STOP CONTROL



Legend

- Sight Triangle Obstructed View
- Sight Triangle Available View

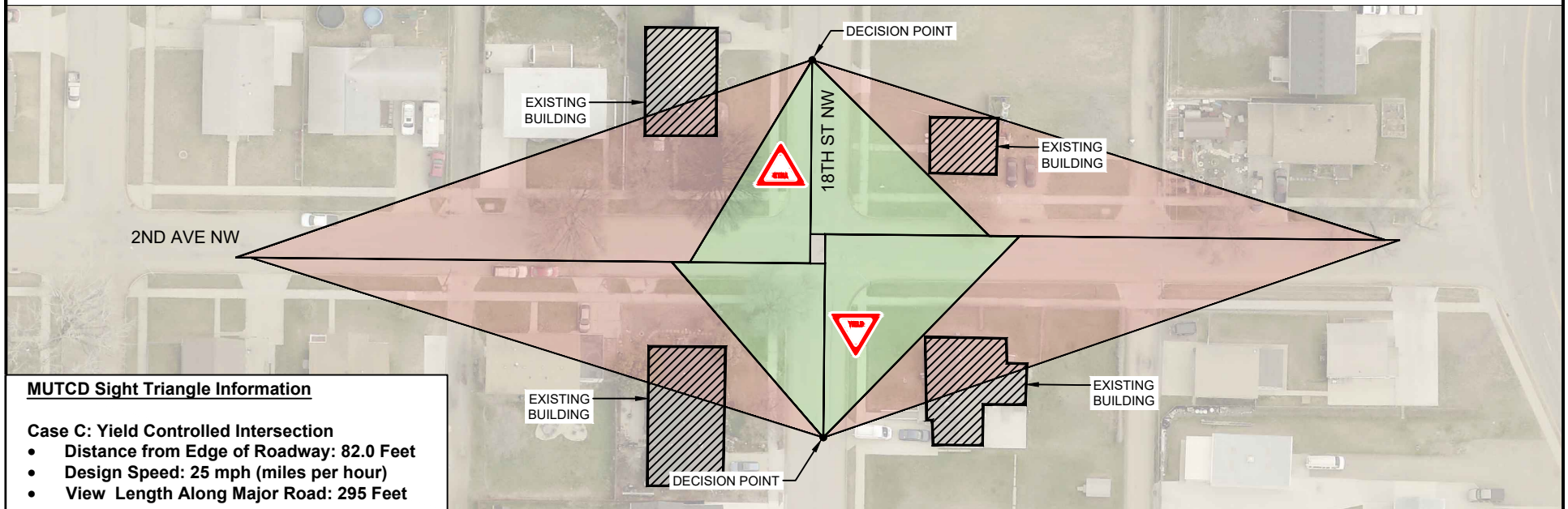
**DEPARTURE SIGHT TRIANGLE
FOR YIELD AND STOP CONDITIONS**

18TH ST NW @ W CENTRAL AVE

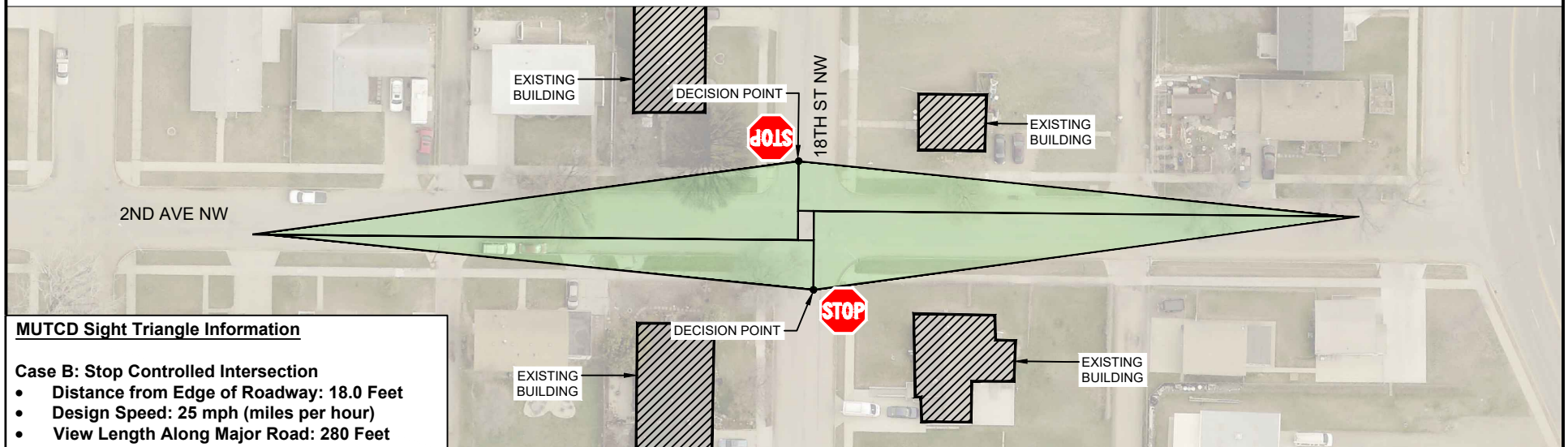
DATE DRAWN: 01/30/2024

City of Minot

CONDITION: APPROACH YIELD CONTROL



CONDITION: DEPARTURE STOP CONTROL



Legend

- Sight Triangle Obstructed View
- Sight Triangle Available View

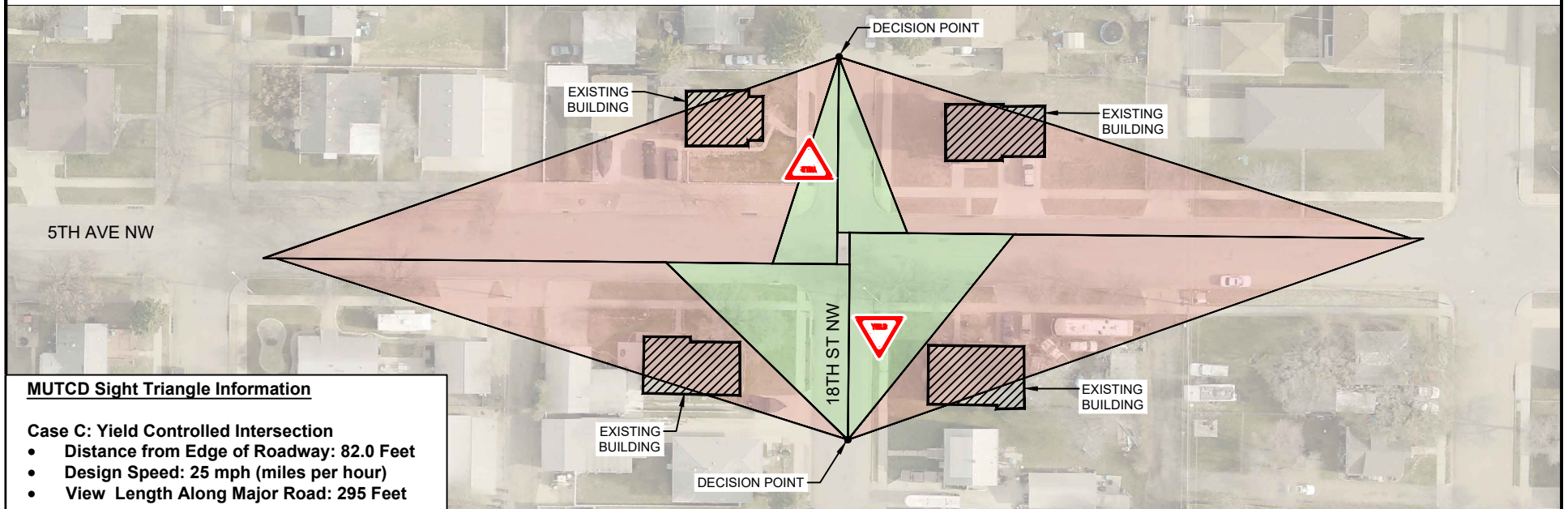
**DEPARTURE SIGHT TRIANGLE
FOR YIELD AND STOP CONDITIONS**

18TH ST NW @ 2ND AVE NW

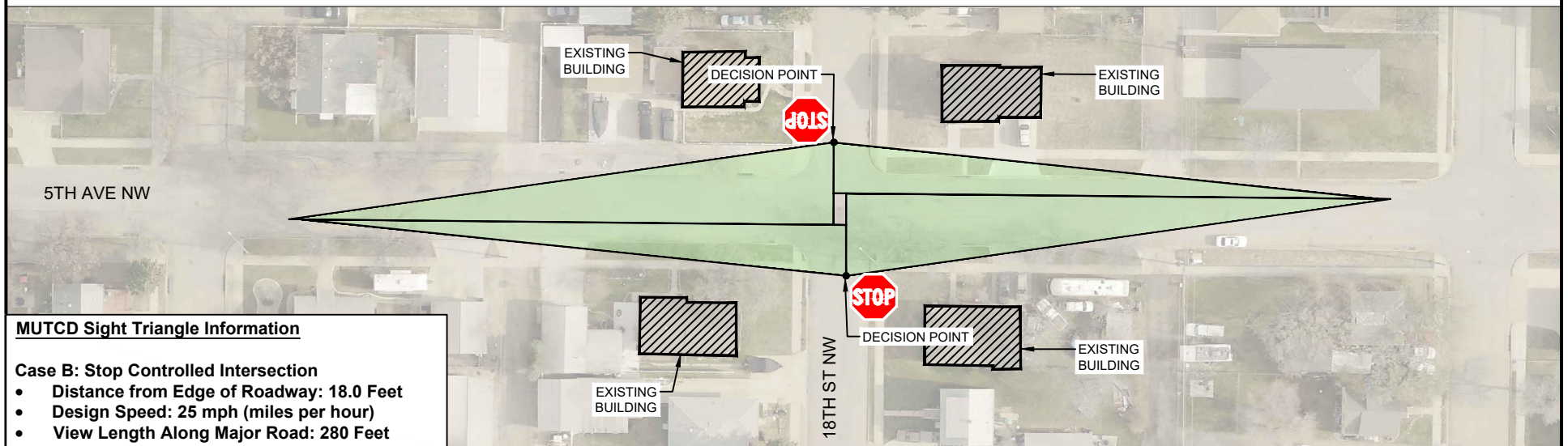
DATE DRAWN: 01/30/2024

City of Minot

CONDITION: APPROACH YIELD CONTROL



CONDITION: DEPARTURE STOP CONTROL



Legend

- Sight Triangle Obstructed View
- Sight Triangle Available View

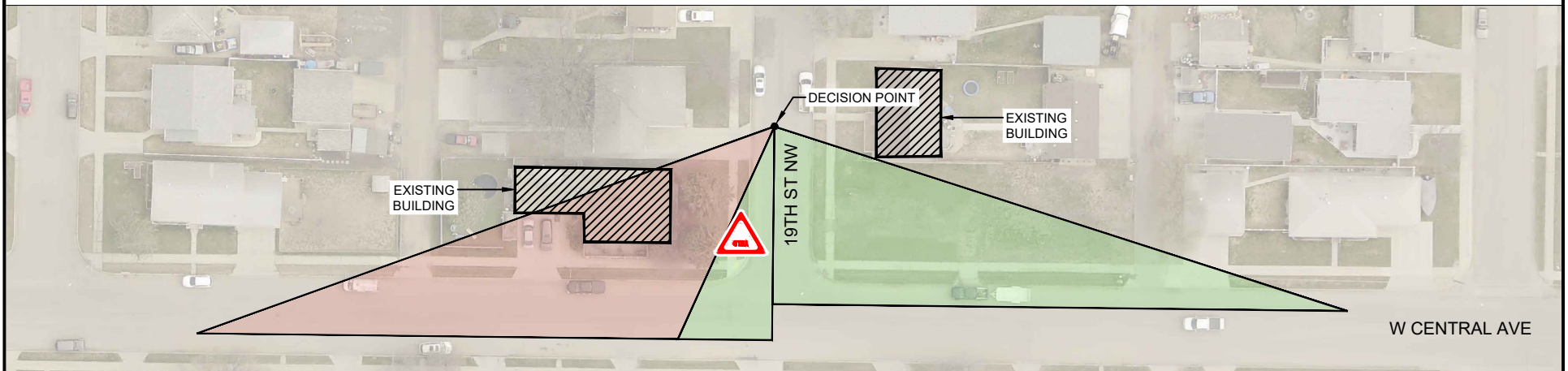
DEPARTURE SIGHT TRIANGLE FOR YIELD AND STOP CONDITIONS

18TH ST NW @ 5TH AVE NW

DATE DRAWN: 01/30/2024

City of Minot

CONDITION: APPROACH YIELD CONTROL

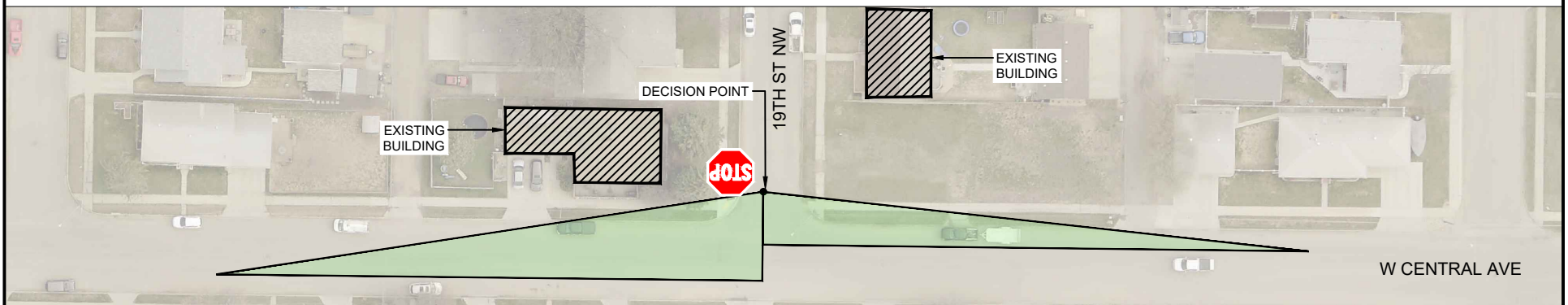


MUTCD Sight Triangle Information

Case C: Yield Controlled Intersection

- Distance from Edge of Roadway: 82.0 Feet
- Design Speed: 25 mph (miles per hour)
- View Length Along Major Road: 295 Feet

CONDITION: DEPARTURE STOP CONTROL



MUTCD Sight Triangle Information

Case B: Stop Controlled Intersection

- Distance from Edge of Roadway: 18.0 Feet
- Design Speed: 25 mph (miles per hour)
- View Length Along Major Road: 280 Feet



Legend

- Sight Triangle Obstructed View
- Sight Triangle Available View

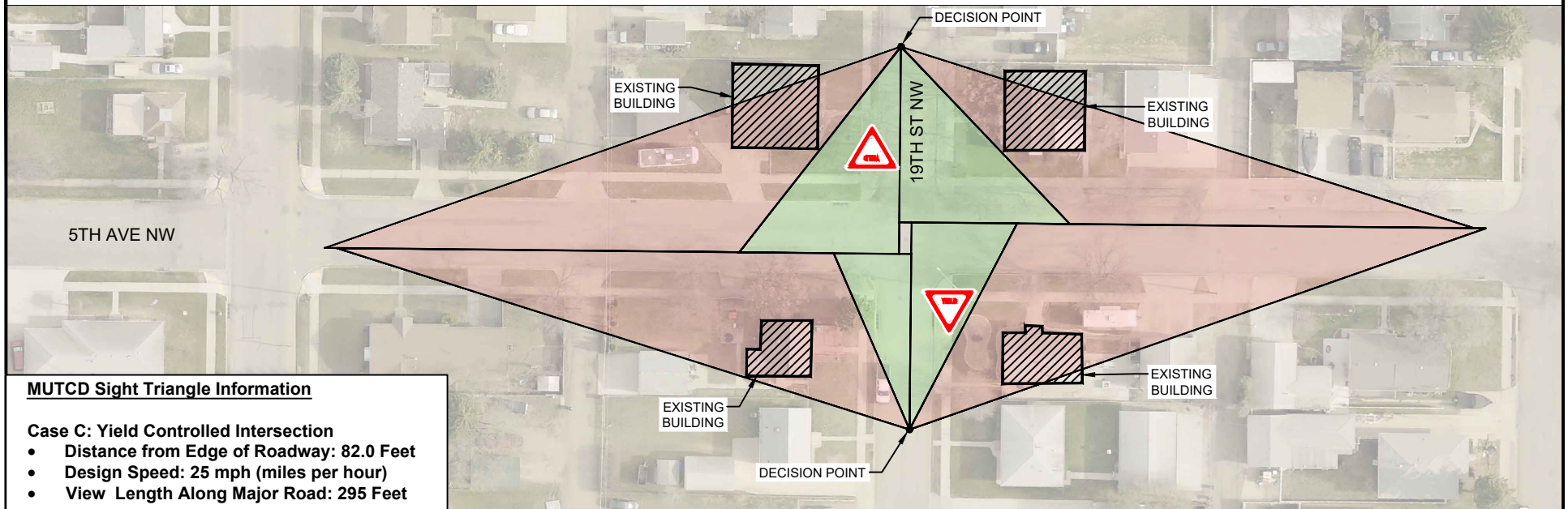
**DEPARTURE SIGHT TRIANGLE
FOR YIELD AND STOP CONDITIONS**

19TH ST NW @ W CENTRAL AVE

DATE DRAWN: 01/30/2024

City of Minot

CONDITION: APPROACH YIELD CONTROL

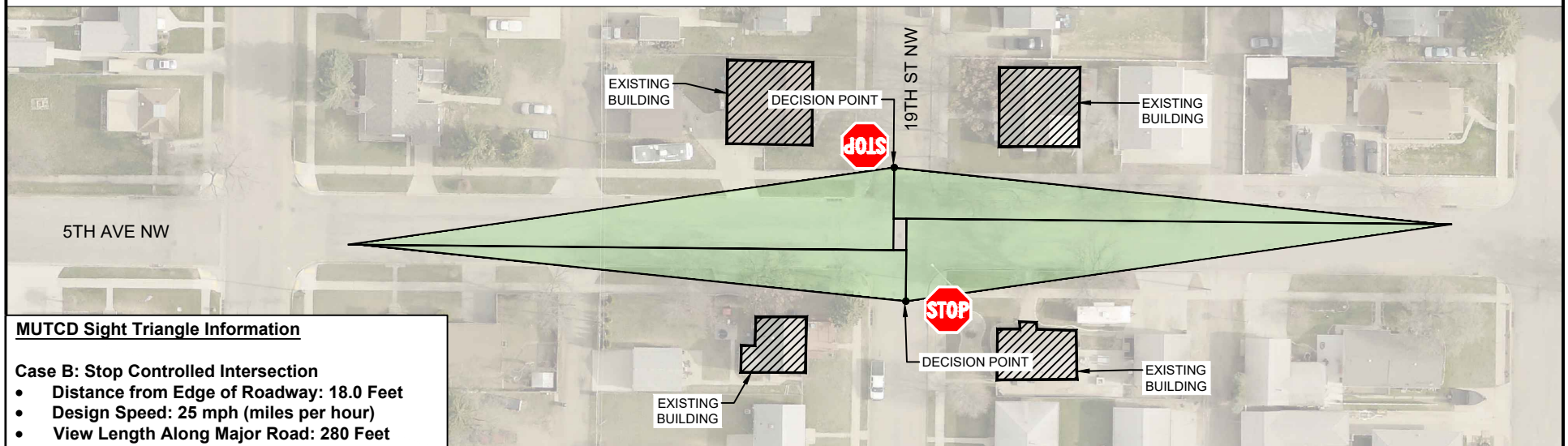


MUTCD Sight Triangle Information

Case C: Yield Controlled Intersection

- Distance from Edge of Roadway: 82.0 Feet
- Design Speed: 25 mph (miles per hour)
- View Length Along Major Road: 295 Feet

CONDITION: DEPARTURE STOP CONTROL



MUTCD Sight Triangle Information

Case B: Stop Controlled Intersection

- Distance from Edge of Roadway: 18.0 Feet
- Design Speed: 25 mph (miles per hour)
- View Length Along Major Road: 280 Feet



Legend

- Sight Triangle Obstructed View
- Sight Triangle Available View

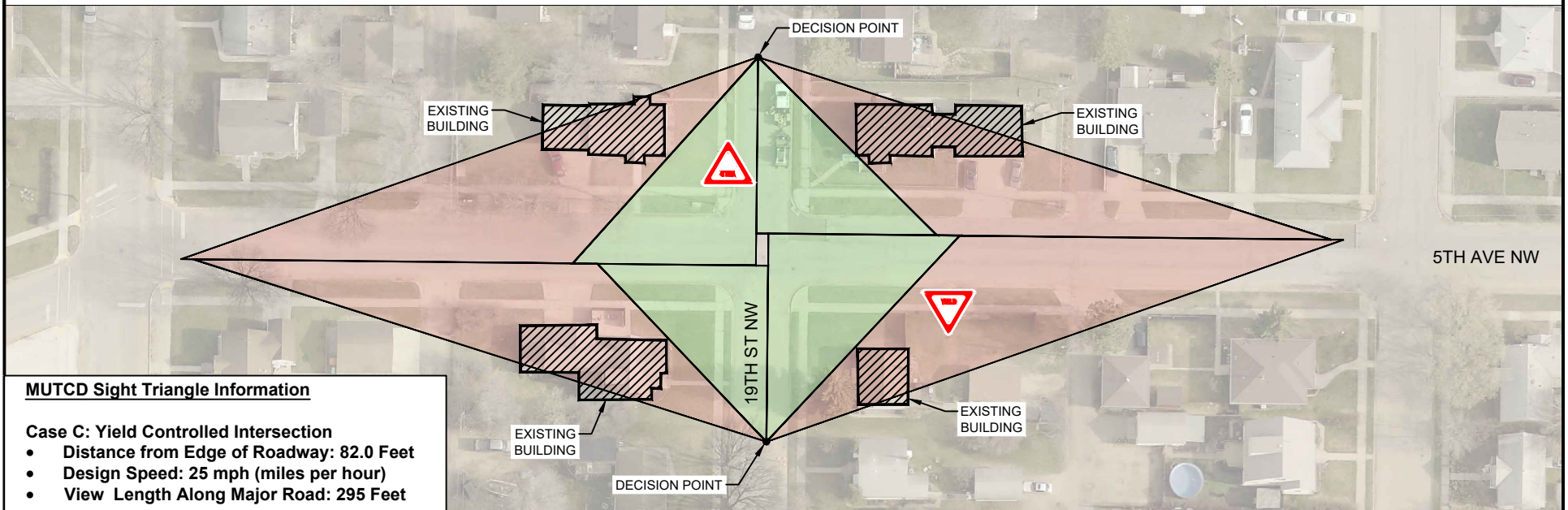
**DEPARTURE SIGHT TRIANGLE
FOR YIELD AND STOP CONDITIONS**

19TH ST NW @ 5TH AVE NW

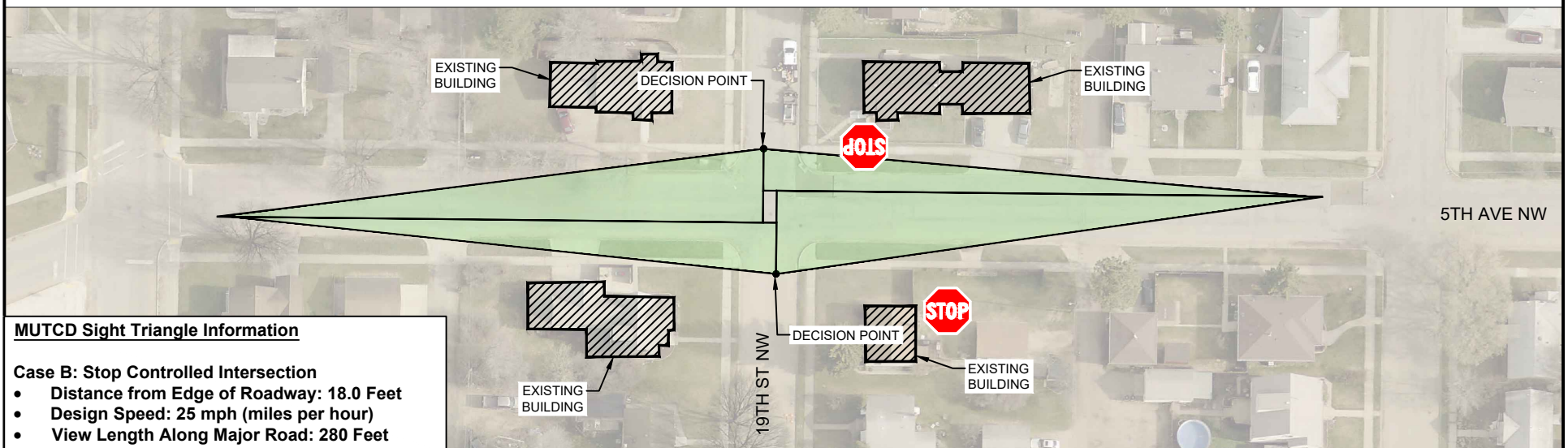
DATE DRAWN: 01/30/2024

City of Minot

CONDITION: APPROACH YIELD CONTROL



CONDITION: DEPARTURE STOP CONTROL



Legend

- Sight Triangle Obstructed View
- Sight Triangle Available View

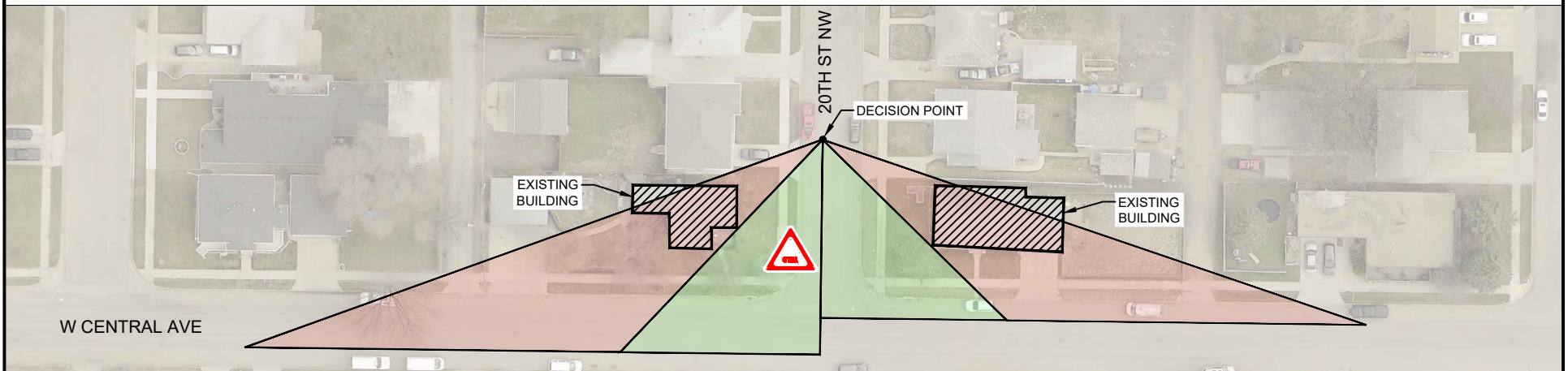
**DEPARTURE SIGHT TRIANGLE
FOR YIELD AND STOP CONDITIONS**

19TH ST NW @ 7TH AVE NW

DATE DRAWN: 01/30/2024

City of Minot

CONDITION: APPROACH YIELD CONTROL

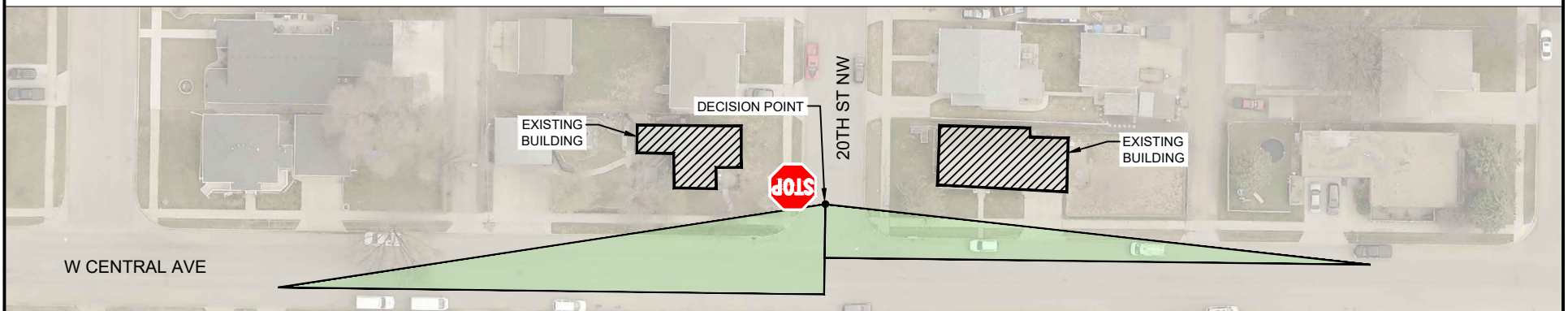


MUTCD Sight Triangle Information

Case C: Yield Controlled Intersection

- Distance from Edge of Roadway: 82.0 Feet
- Design Speed: 25 mph (miles per hour)
- View Length Along Major Road: 295 Feet

CONDITION: DEPARTURE STOP CONTROL



MUTCD Sight Triangle Information

Case B: Stop Controlled Intersection

- Distance from Edge of Roadway: 18.0 Feet
- Design Speed: 25 mph (miles per hour)
- View Length Along Major Road: 280 Feet



Legend

- Sight Triangle Obstructed View
- Sight Triangle Available View

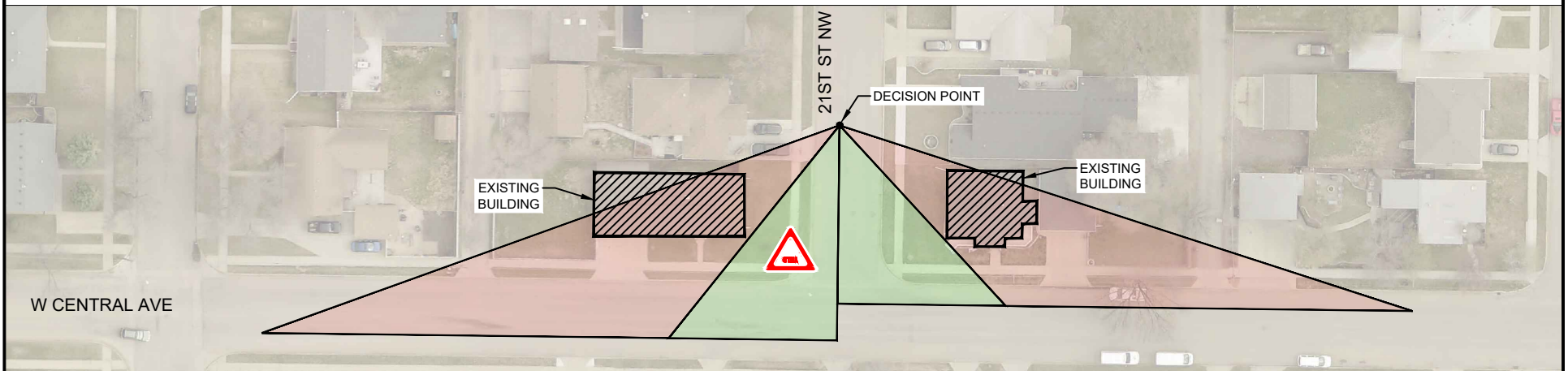
**DEPARTURE SIGHT TRIANGLE
FOR YIELD AND STOP CONDITIONS**

20TH ST NW @ W CENTRAL AVE

DATE DRAWN: 01/30/2024

City of Minot

CONDITION: APPROACH YIELD CONTROL

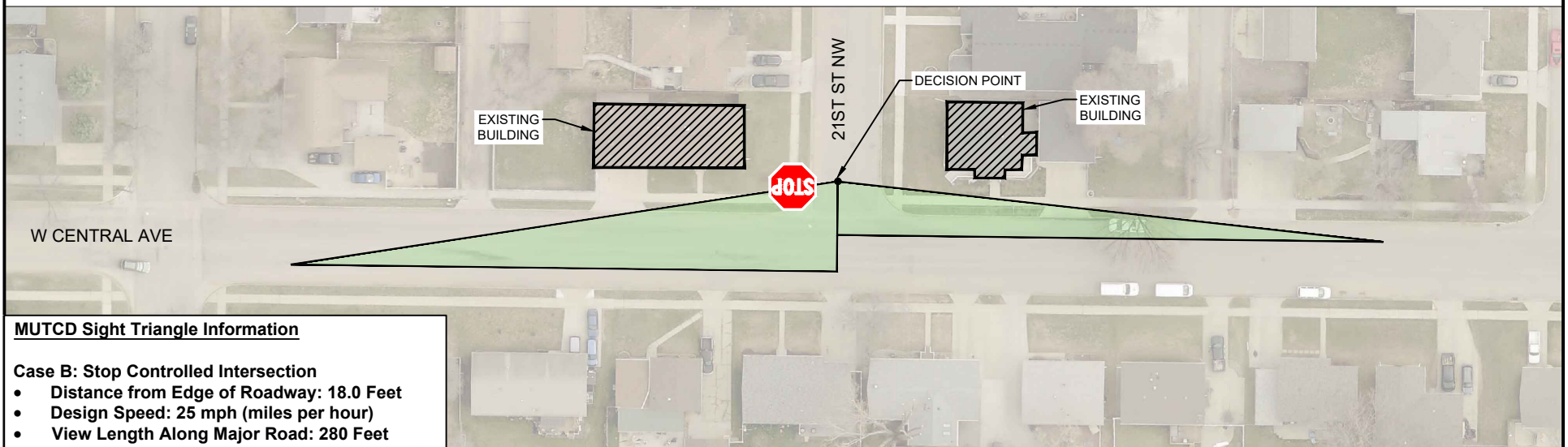


MUTCD Sight Triangle Information

Case C: Yield Controlled Intersection

- Distance from Edge of Roadway: 82.0 Feet
- Design Speed: 25 mph (miles per hour)
- View Length Along Major Road: 295 Feet

CONDITION: DEPARTURE STOP CONTROL



MUTCD Sight Triangle Information

Case B: Stop Controlled Intersection

- Distance from Edge of Roadway: 18.0 Feet
- Design Speed: 25 mph (miles per hour)
- View Length Along Major Road: 280 Feet



Legend

- Sight Triangle Obstructed View
- Sight Triangle Available View

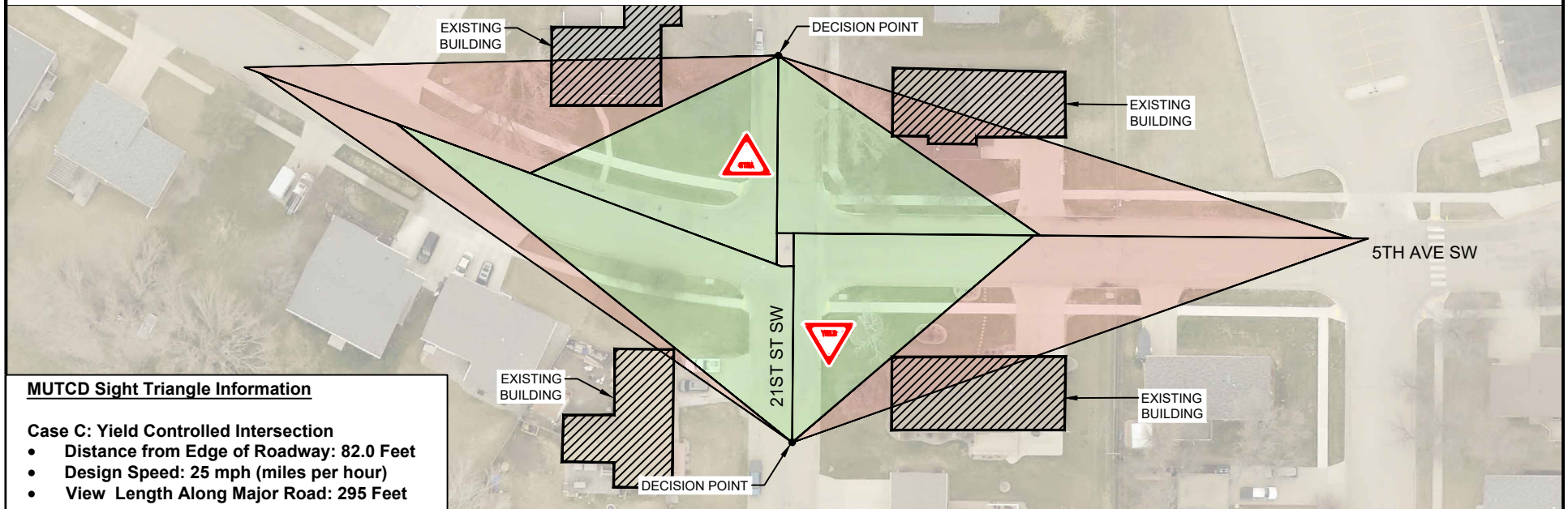
**DEPARTURE SIGHT TRIANGLE
FOR YIELD AND STOP CONDITIONS**

21ST ST NW @ W CENTRAL AVE

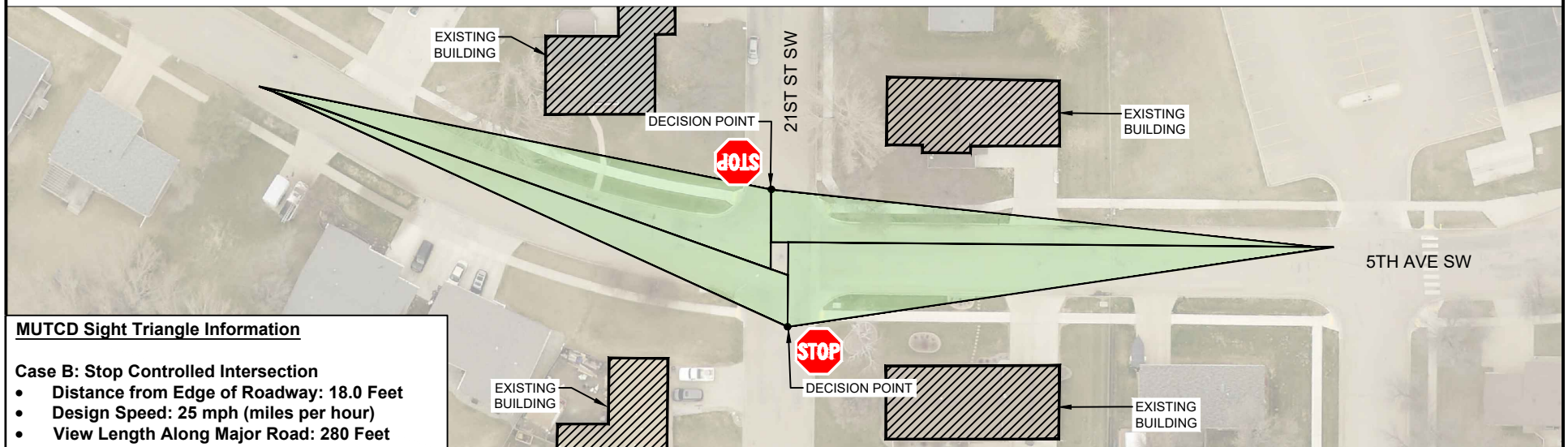
DATE DRAWN: 01/30/2024

City of Minot

CONDITION: APPROACH YIELD CONTROL



CONDITION: DEPARTURE STOP CONTROL



Legend

- Sight Triangle Obstructed View
- Sight Triangle Available View

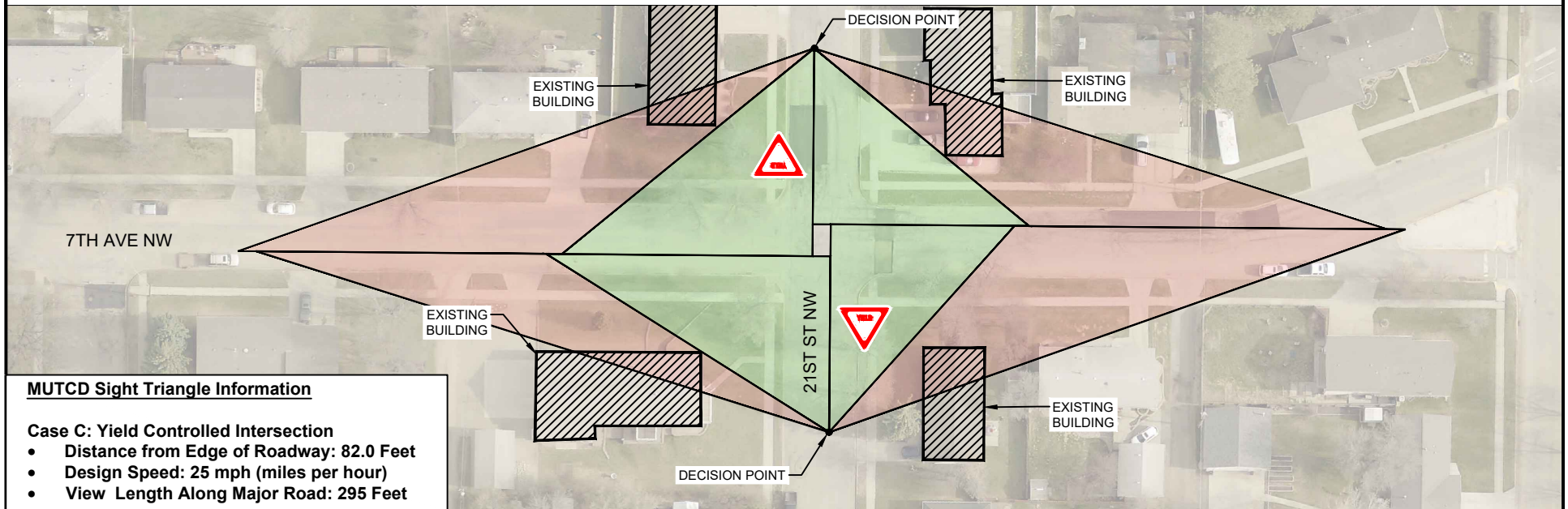
DEPARTURE SIGHT TRIANGLE FOR YIELD AND STOP CONDITIONS

21ST ST SW @ 5TH AVE SW

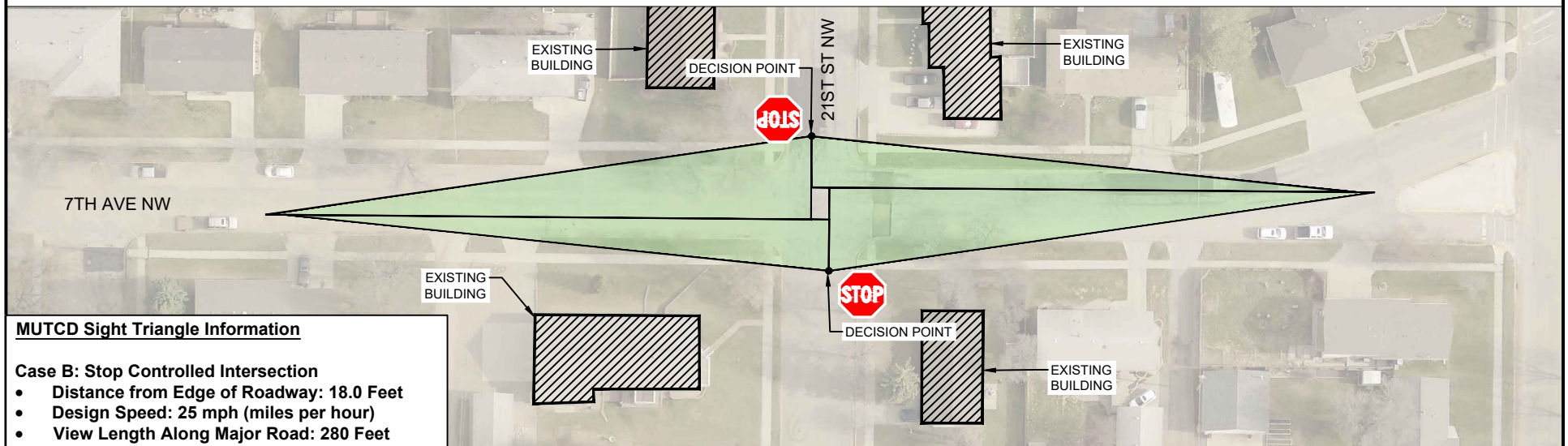
DATE DRAWN: 01/31/2024

City of Minot

CONDITION: APPROACH YIELD CONTROL



CONDITION: DEPARTURE STOP CONTROL



Legend

- Sight Triangle Obstructed View
- Sight Triangle Available View

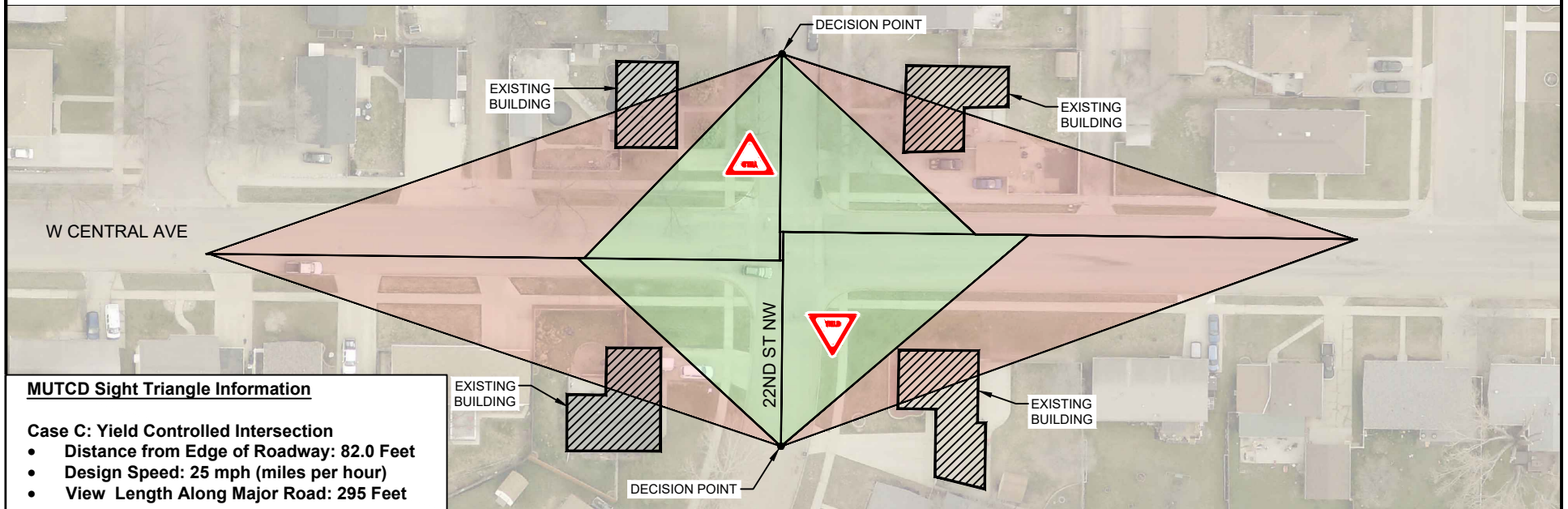
**DEPARTURE SIGHT TRIANGLE
FOR YIELD AND STOP CONDITIONS**

21ST ST NW @ 7TH AVE NW

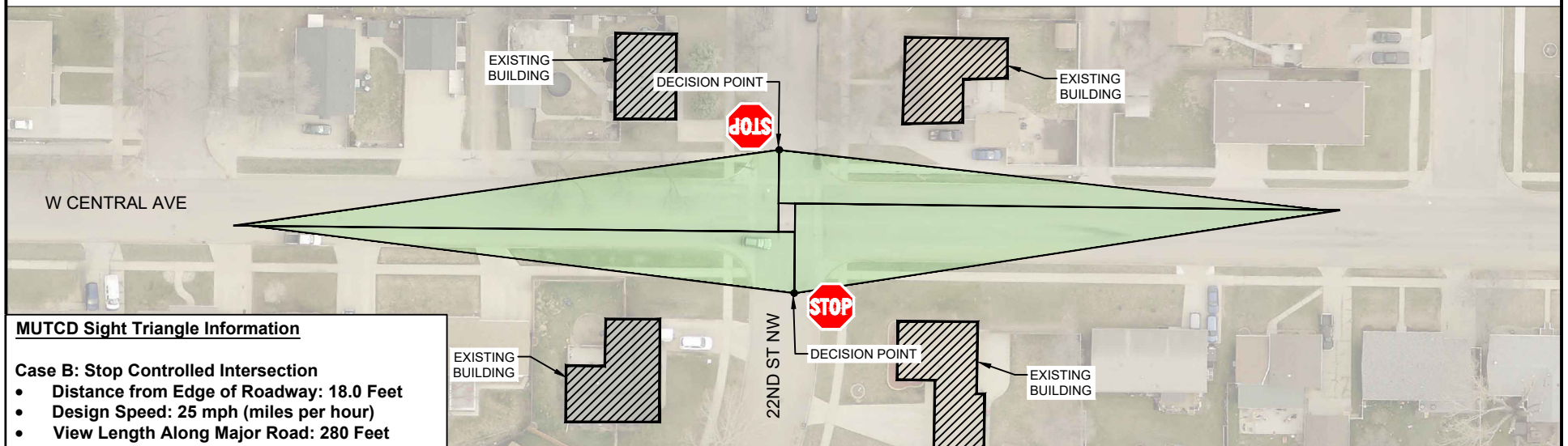
DATE DRAWN: 01/31/2024

City of Minot

CONDITION: APPROACH YIELD CONTROL



CONDITION: DEPARTURE STOP CONTROL



Legend

- Sight Triangle Obstructed View
- Sight Triangle Available View

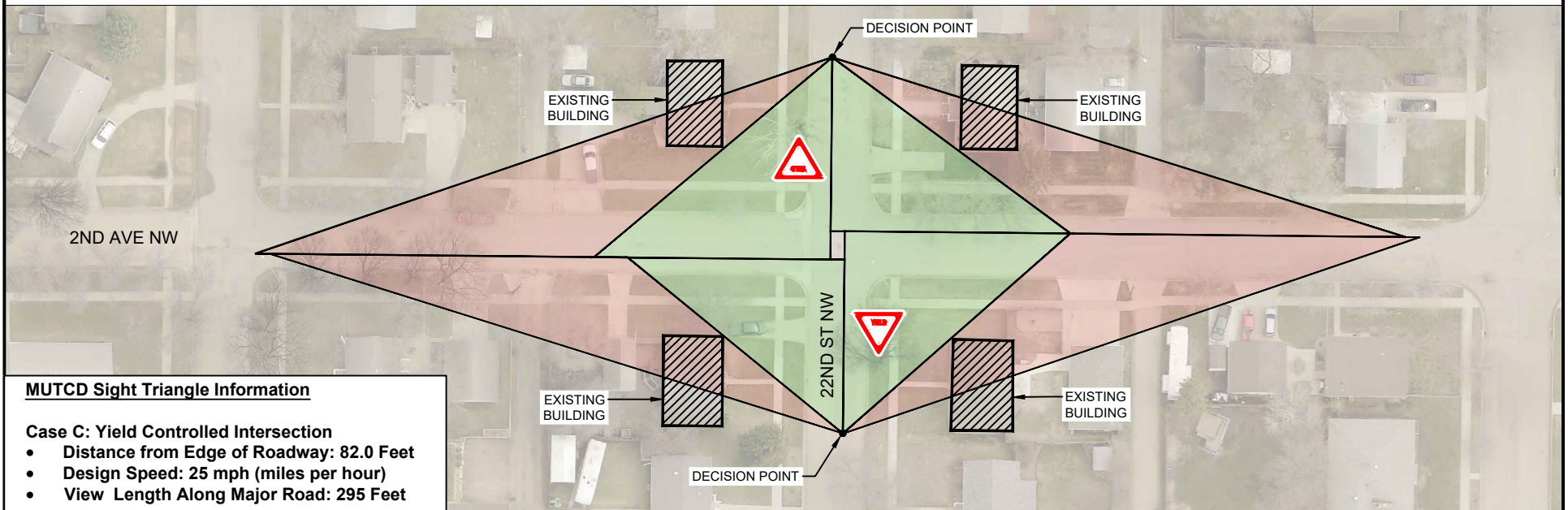
DEPARTURE SIGHT TRIANGLE FOR YIELD AND STOP CONDITIONS

22ND ST NW @ W CENTRAL AVE

DATE DRAWN: 01/30/2024

City of Minot

CONDITION: APPROACH YIELD CONTROL

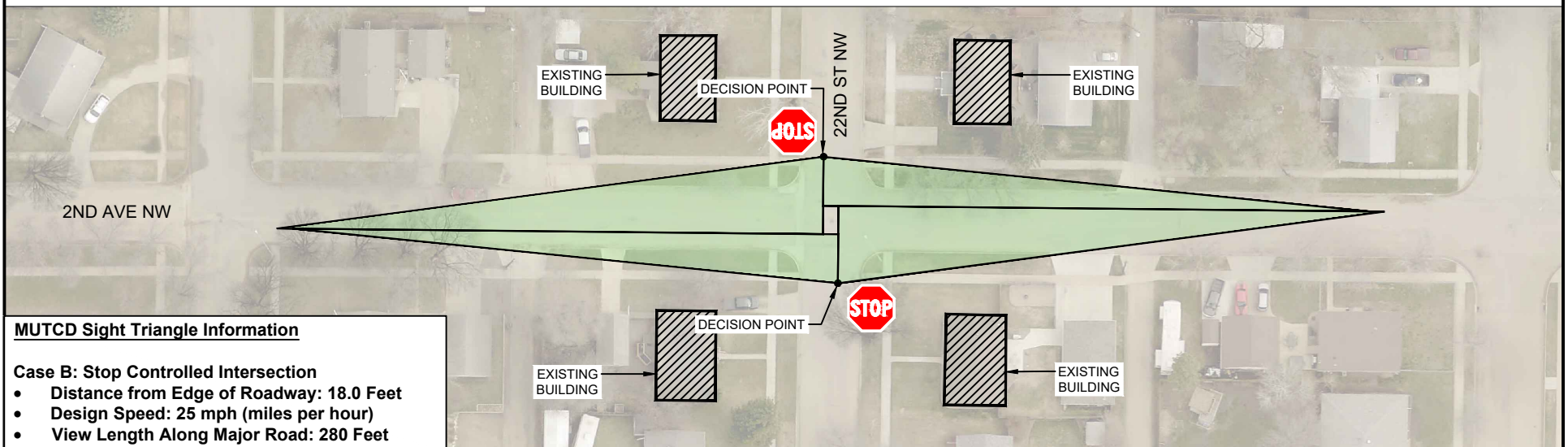


MUTCD Sight Triangle Information

Case C: Yield Controlled Intersection

- Distance from Edge of Roadway: 82.0 Feet
- Design Speed: 25 mph (miles per hour)
- View Length Along Major Road: 295 Feet

CONDITION: DEPARTURE STOP CONTROL



MUTCD Sight Triangle Information

Case B: Stop Controlled Intersection

- Distance from Edge of Roadway: 18.0 Feet
- Design Speed: 25 mph (miles per hour)
- View Length Along Major Road: 280 Feet



Legend

- Sight Triangle Obstructed View
- Sight Triangle Available View

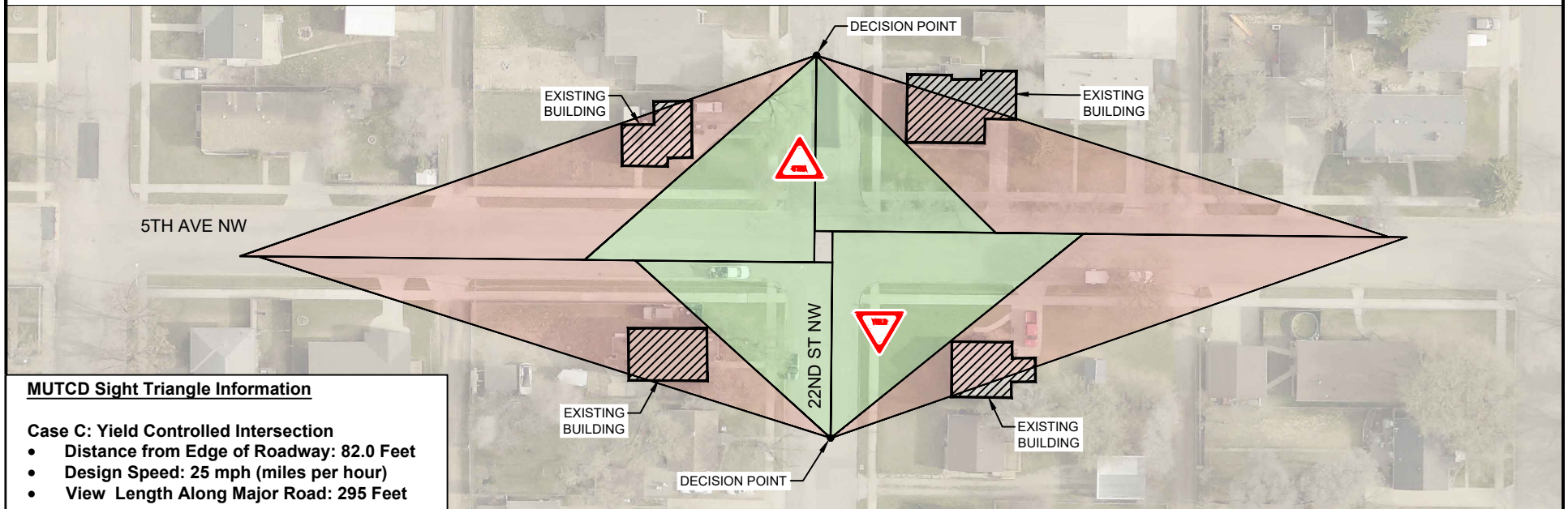
DEPARTURE SIGHT TRIANGLE FOR YIELD AND STOP CONDITIONS

22ND ST NW @ 2ND AVE NW

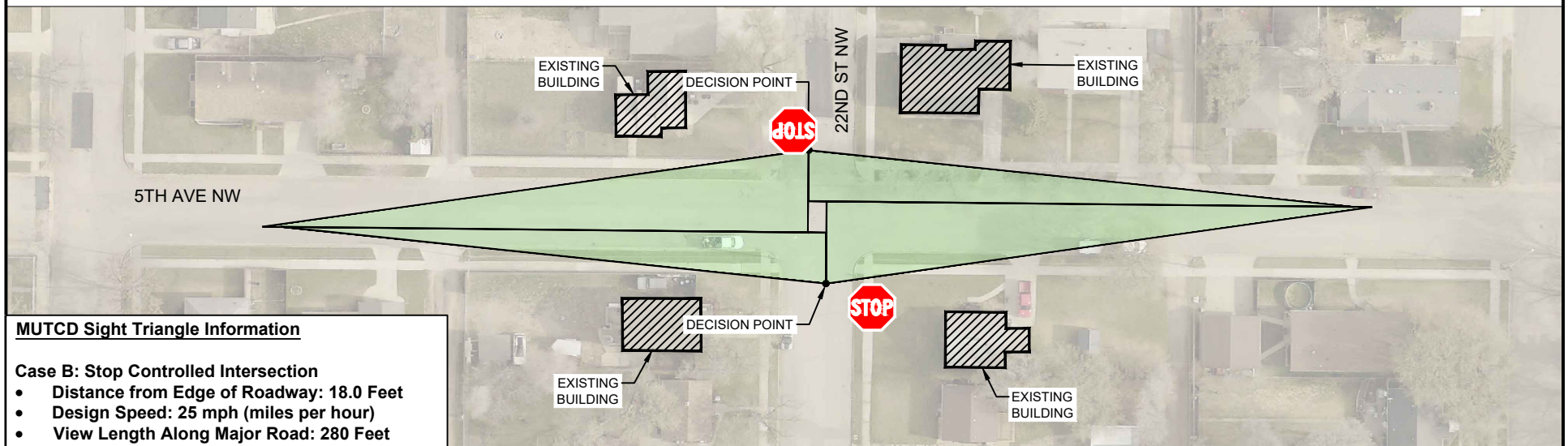
DATE DRAWN: 01/31/2024

City of Minot

CONDITION: APPROACH YIELD CONTROL



CONDITION: DEPARTURE STOP CONTROL



Legend

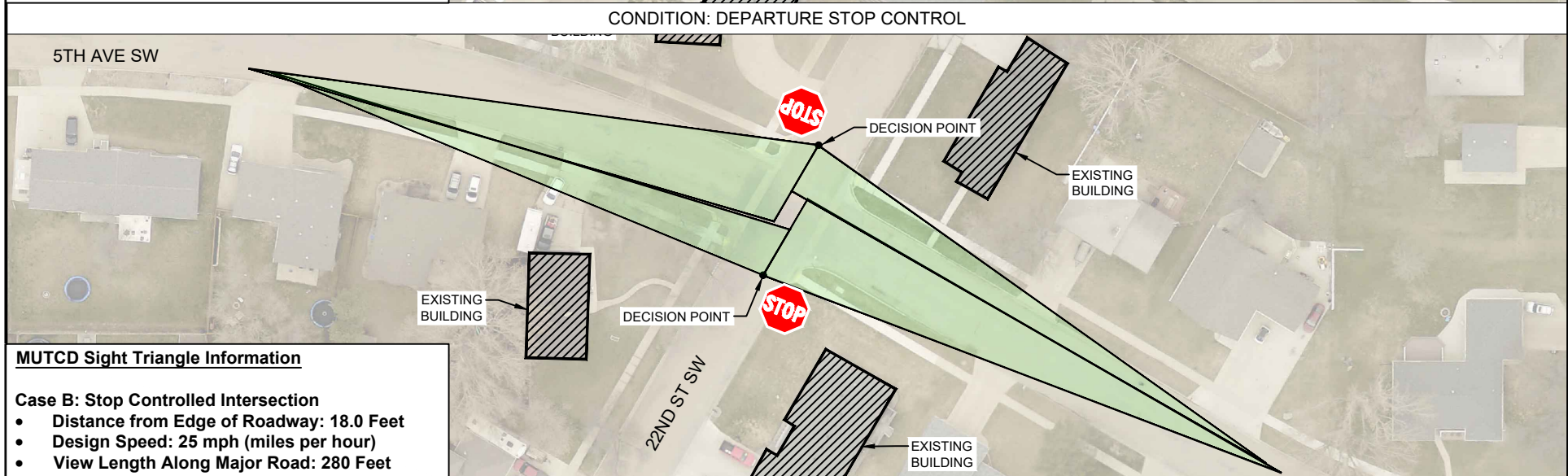
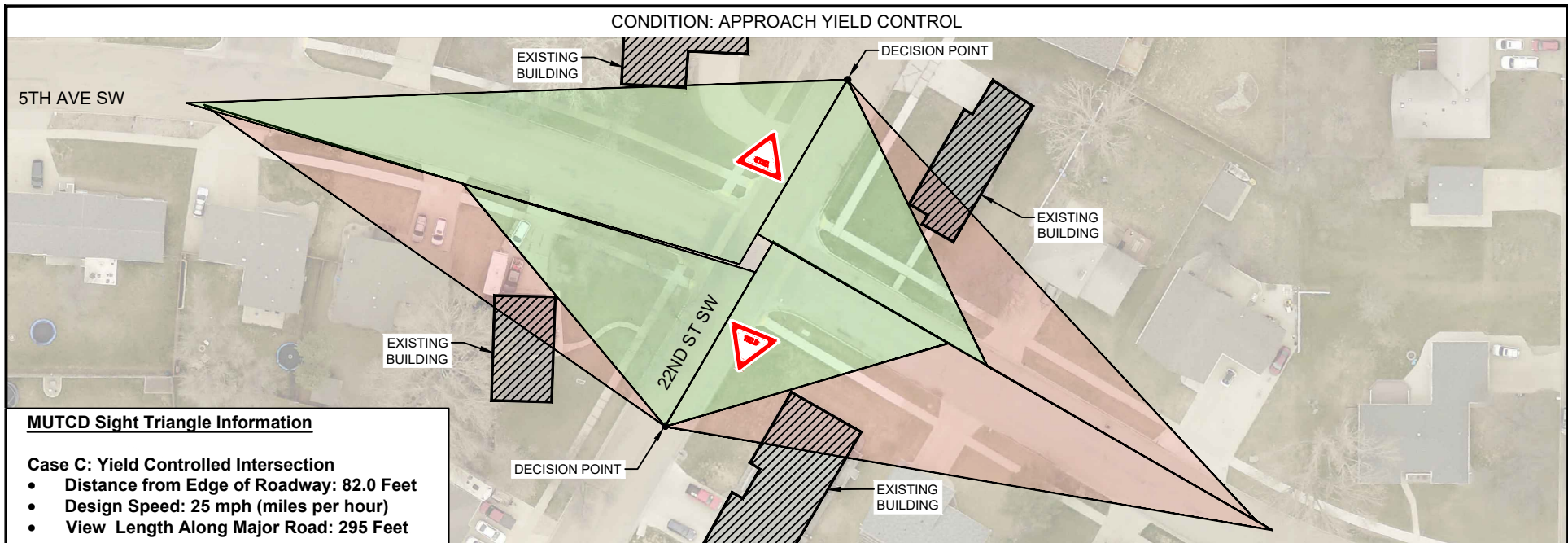
- Sight Triangle Obstructed View
- Sight Triangle Available View

**DEPARTURE SIGHT TRIANGLE
FOR YIELD AND STOP CONDITIONS**

22ND ST NW @ 5TH AVE NW

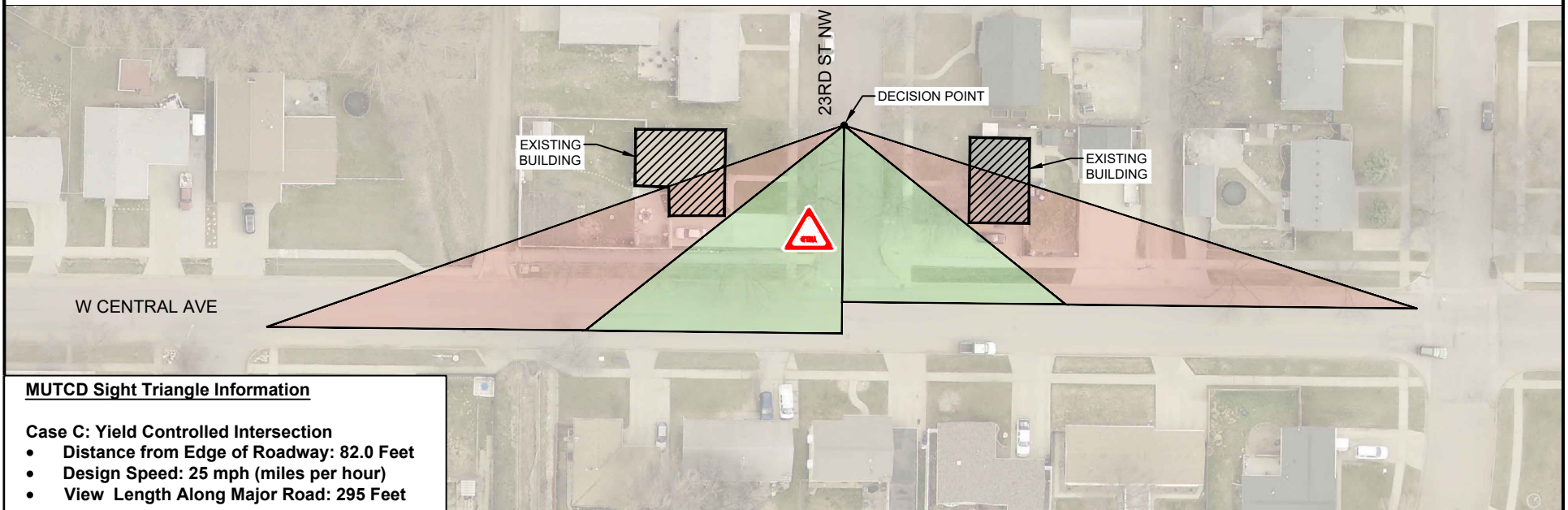
DATE DRAWN: 01/31/2024

City of Minot

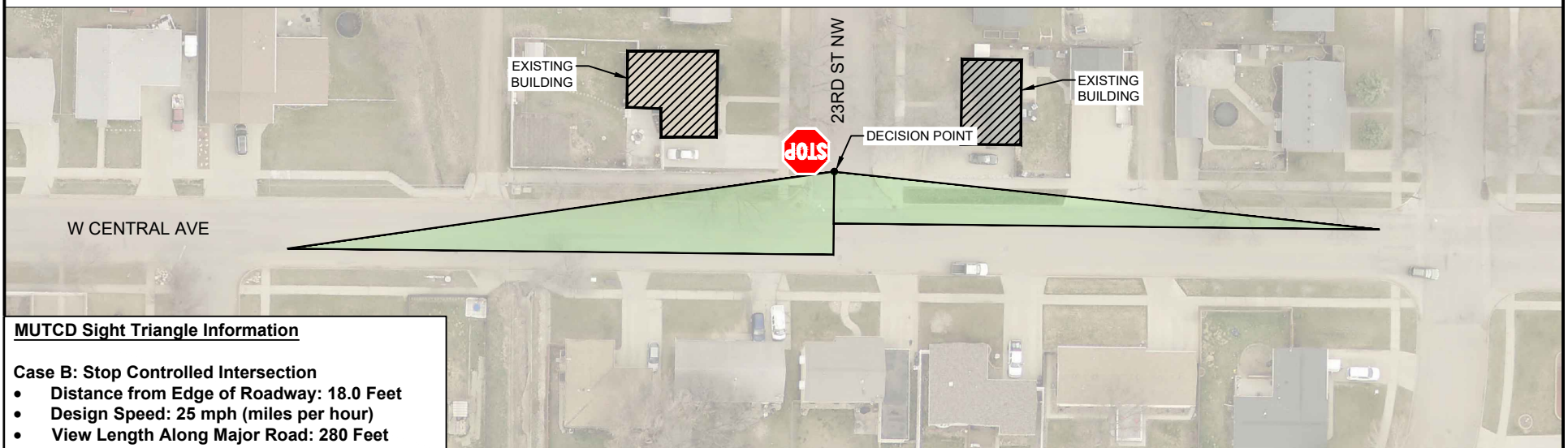


	<p>Legend</p> <div style="display: flex; align-items: center; margin-bottom: 5px;"> <div style="width: 20px; height: 10px; background-color: #f8d7da; border: 1px solid #c00; margin-right: 5px;"></div> Sight Triangle Obstructed View </div> <div style="display: flex; align-items: center;"> <div style="width: 20px; height: 10px; background-color: #d4edda; border: 1px solid #c00; margin-right: 5px;"></div> Sight Triangle Available View </div>	<p>DEPARTURE SIGHT TRIANGLE FOR YIELD AND STOP CONDITIONS</p> <p>22ND ST SW @ 5TH AVE SW</p> <p><small>DATE DRAWN: 02/02/2024</small></p>	
--	-------------------------------------------------------------------------------------------------------------------------------------------------------------------------------------------------------------------------------------------------------------------------------------------------------------------------------------------------------------------------------------------------------------------------------------------------------------------	-------------------------------------------------------------------------------------------------------------------------------------------------------------	--

CONDITION: APPROACH YIELD CONTROL



CONDITION: DEPARTURE STOP CONTROL



Legend

- Sight Triangle Obstructed View
- Sight Triangle Available View

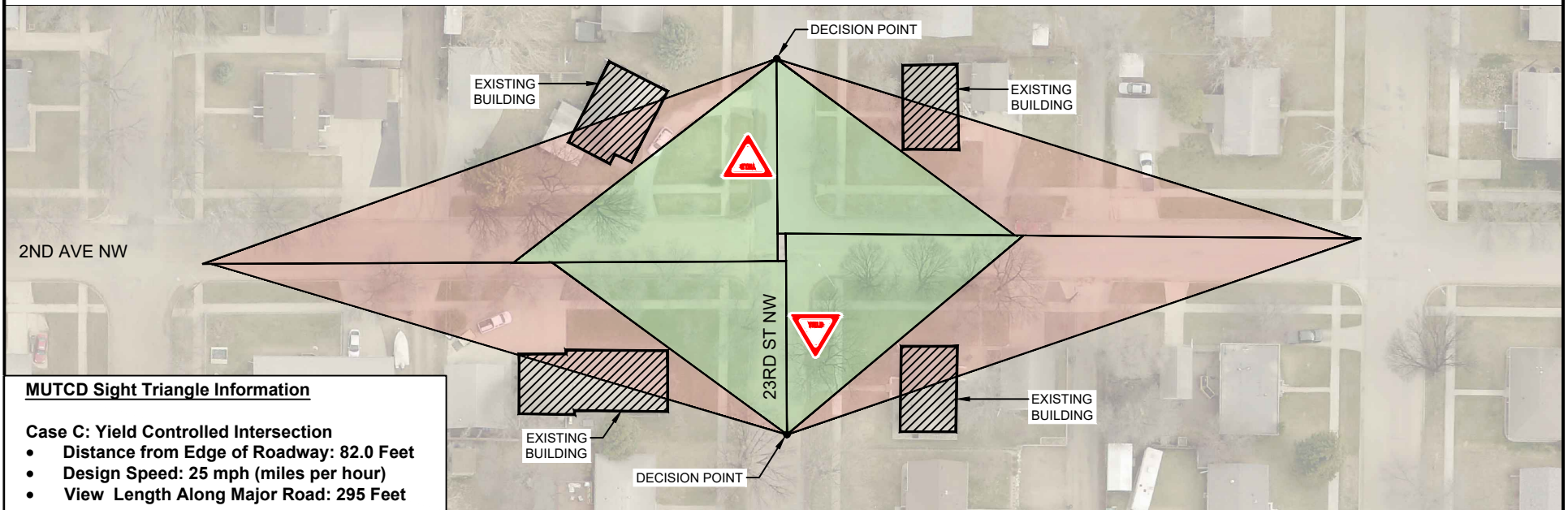
**DEPARTURE SIGHT TRIANGLE
FOR YIELD AND STOP CONDITIONS**

23RD ST NW @ W CENTRAL AVE

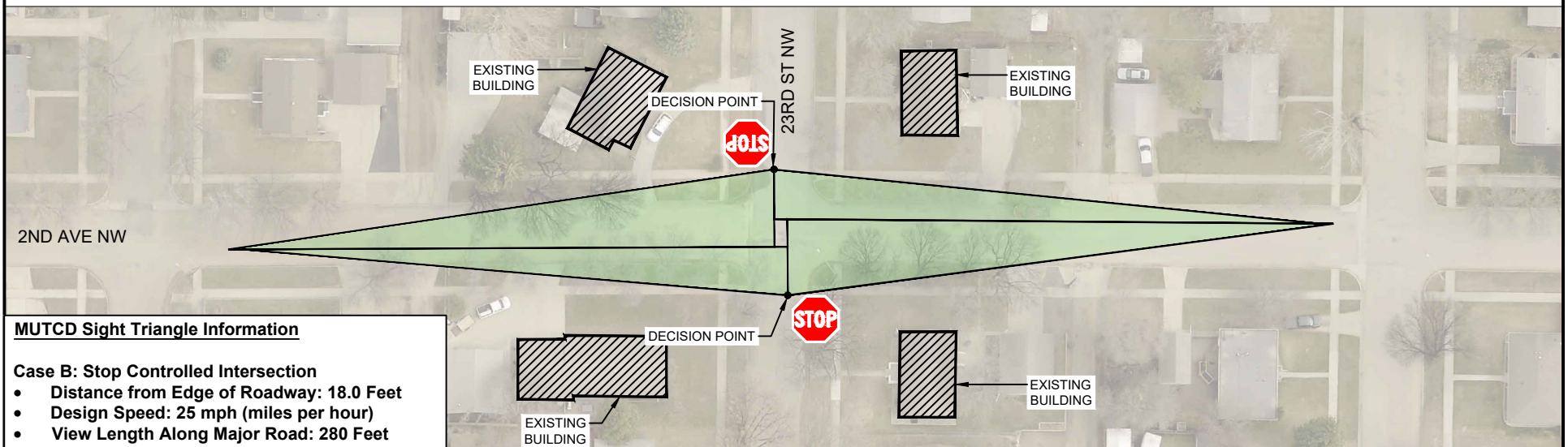
DATE DRAWN: 01/30/2024

City of Minot

CONDITION: APPROACH YIELD CONTROL



CONDITION: DEPARTURE STOP CONTROL



Legend

- Sight Triangle Obstructed View
- Sight Triangle Available View

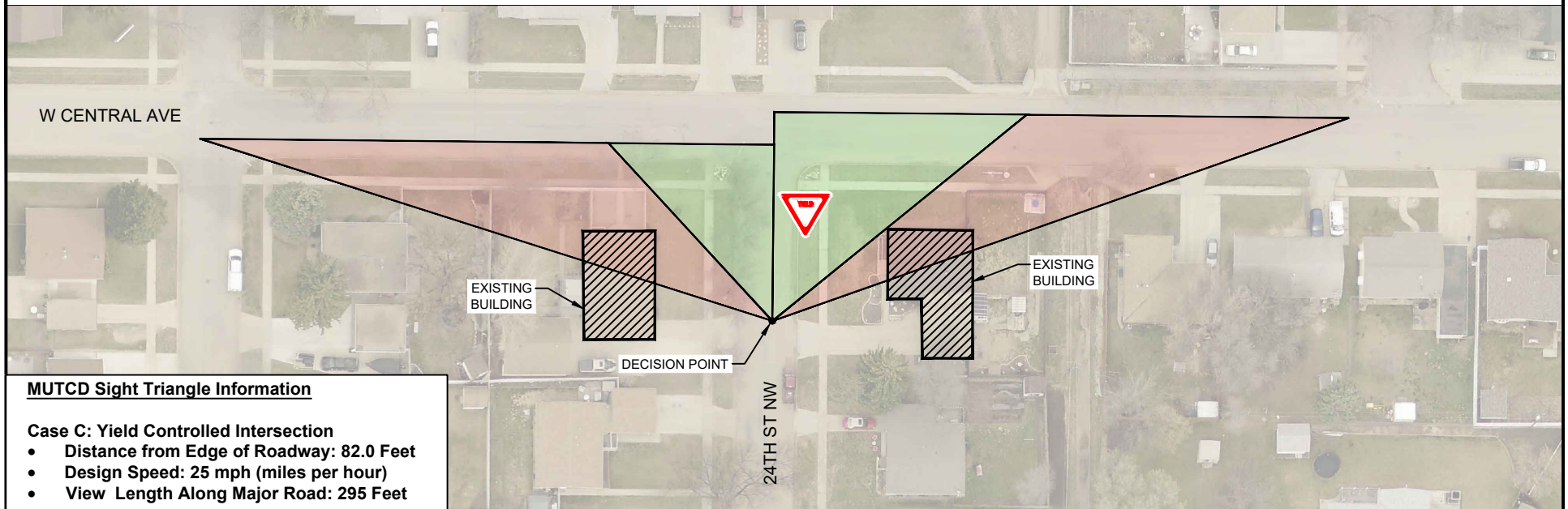
**DEPARTURE SIGHT TRIANGLE
FOR YIELD AND STOP CONDITIONS**

23RD ST NW @ 2ND AVE NW

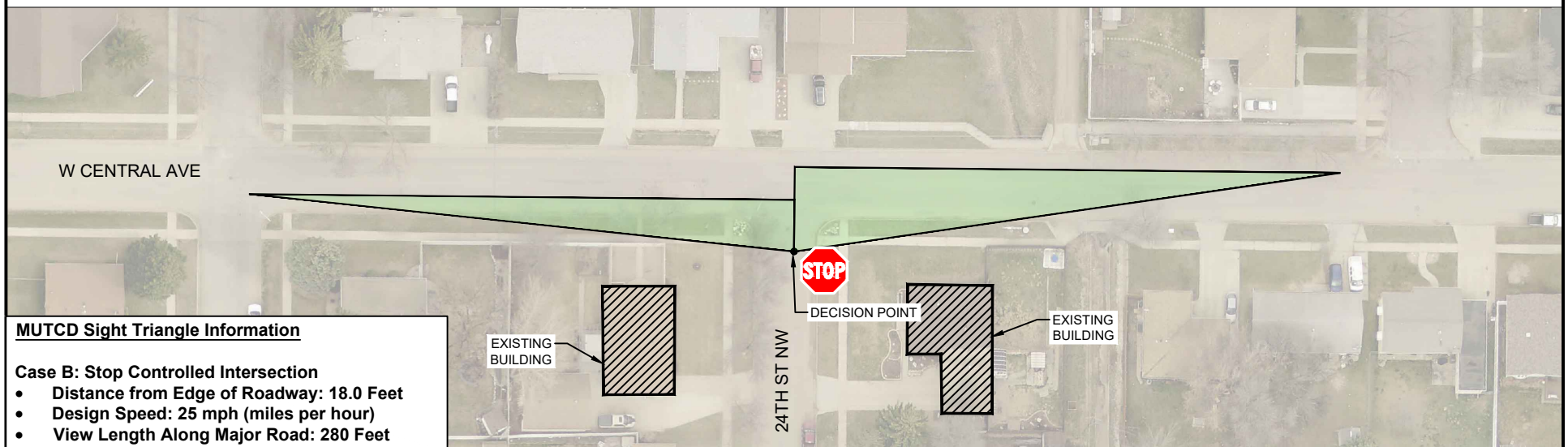
DATE DRAWN: 02/02/2024

City of Minot

CONDITION: APPROACH YIELD CONTROL



CONDITION: DEPARTURE STOP CONTROL



Legend

- Sight Triangle Obstructed View
- Sight Triangle Available View

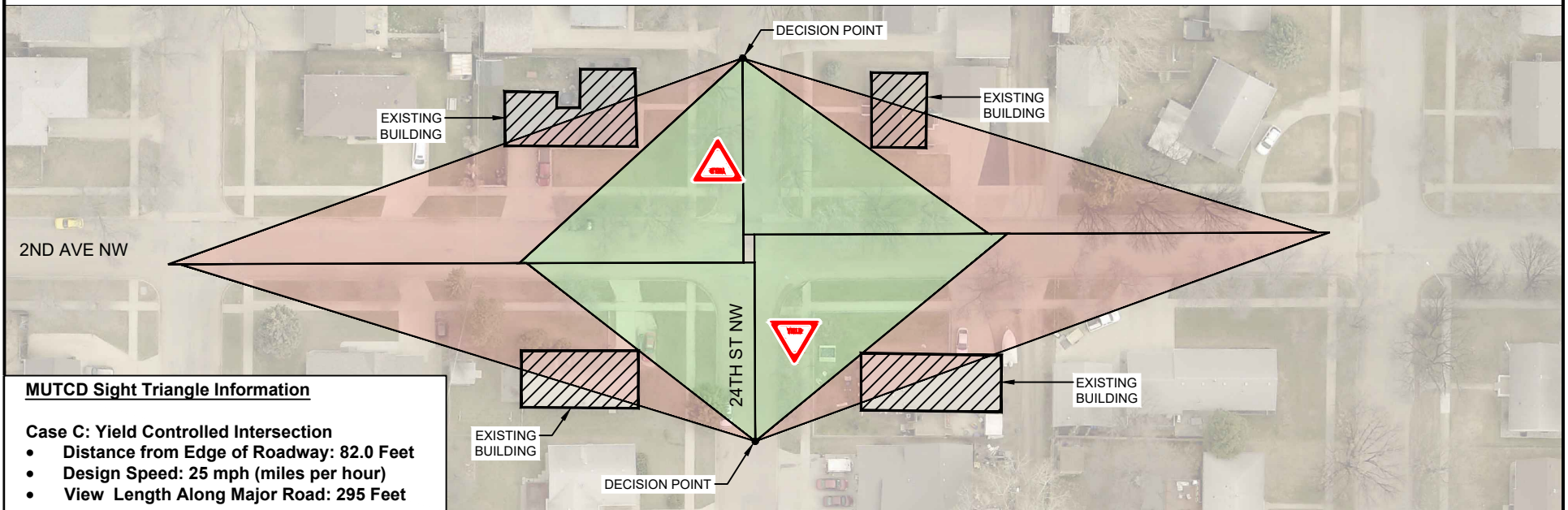
DEPARTURE SIGHT TRIANGLE
FOR YIELD AND STOP CONDITIONS

24TH ST NW @ W CENTRAL AVE

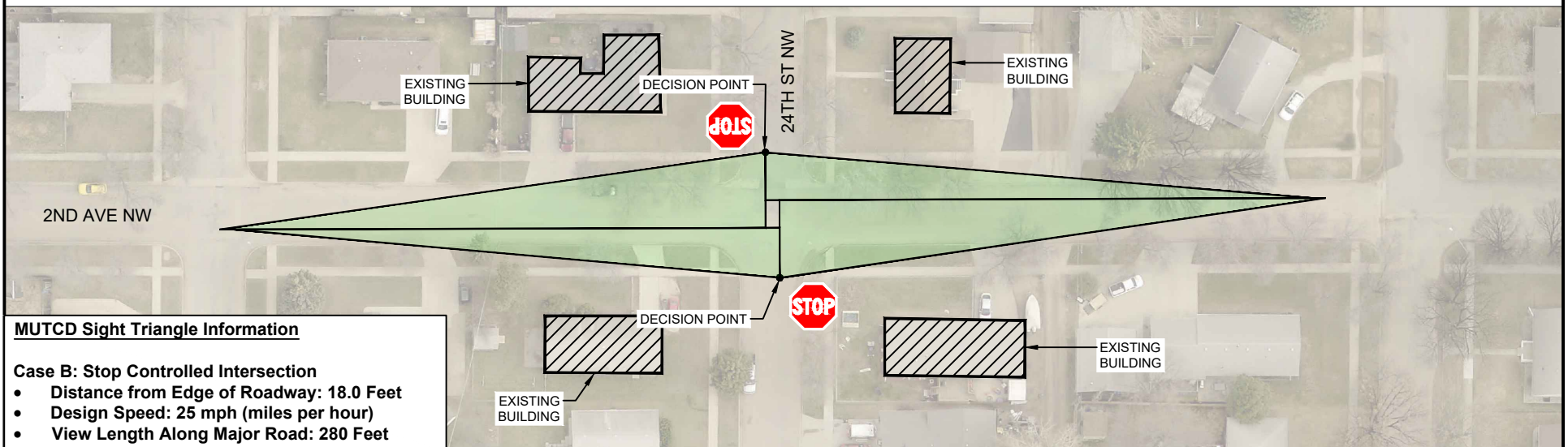
DATE DRAWN: 01/30/2024

City of Minot

CONDITION: APPROACH YIELD CONTROL



CONDITION: DEPARTURE STOP CONTROL



Legend

- Sight Triangle Obstructed View
- Sight Triangle Available View

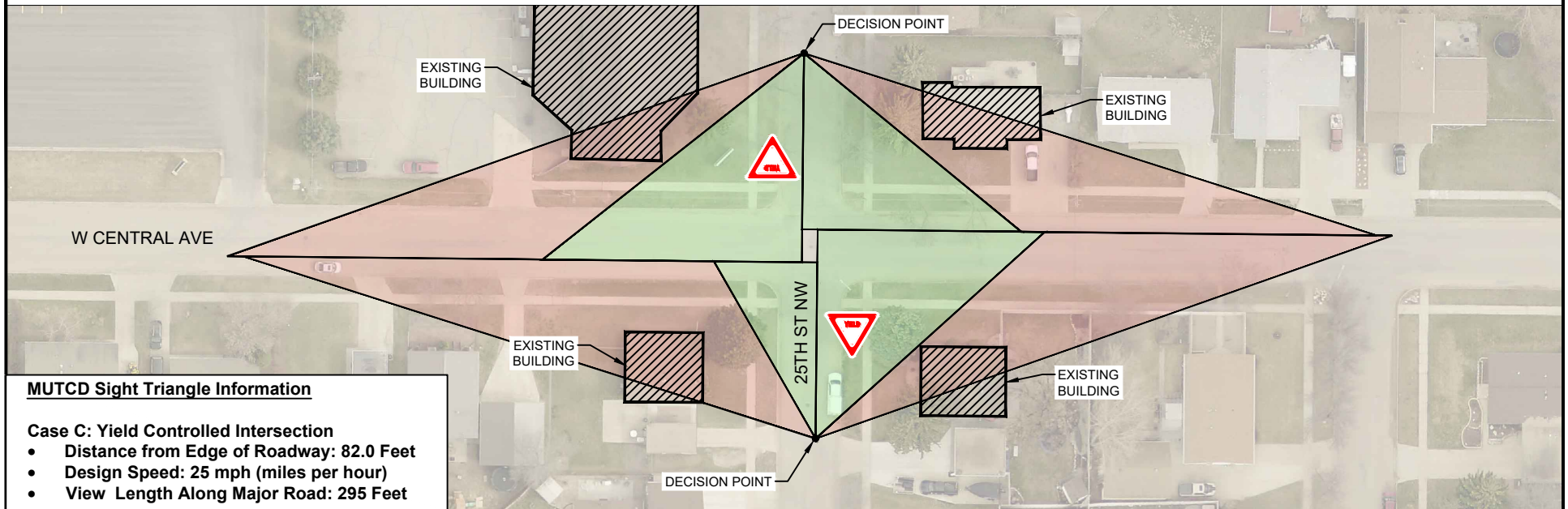
**DEPARTURE SIGHT TRIANGLE
FOR YIELD AND STOP CONDITIONS**

24TH ST NW @ 2ND AVE NW

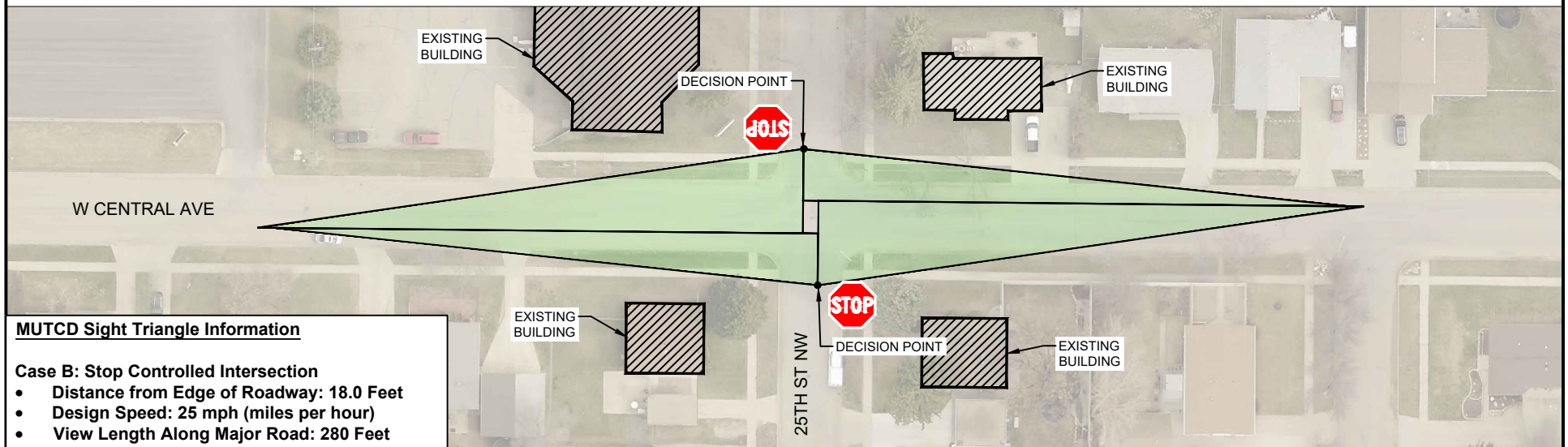
DATE DRAWN: 02/20/2024

City of Minot

CONDITION: APPROACH YIELD CONTROL



CONDITION: DEPARTURE STOP CONTROL



Legend

- Sight Triangle Obstructed View
- Sight Triangle Available View

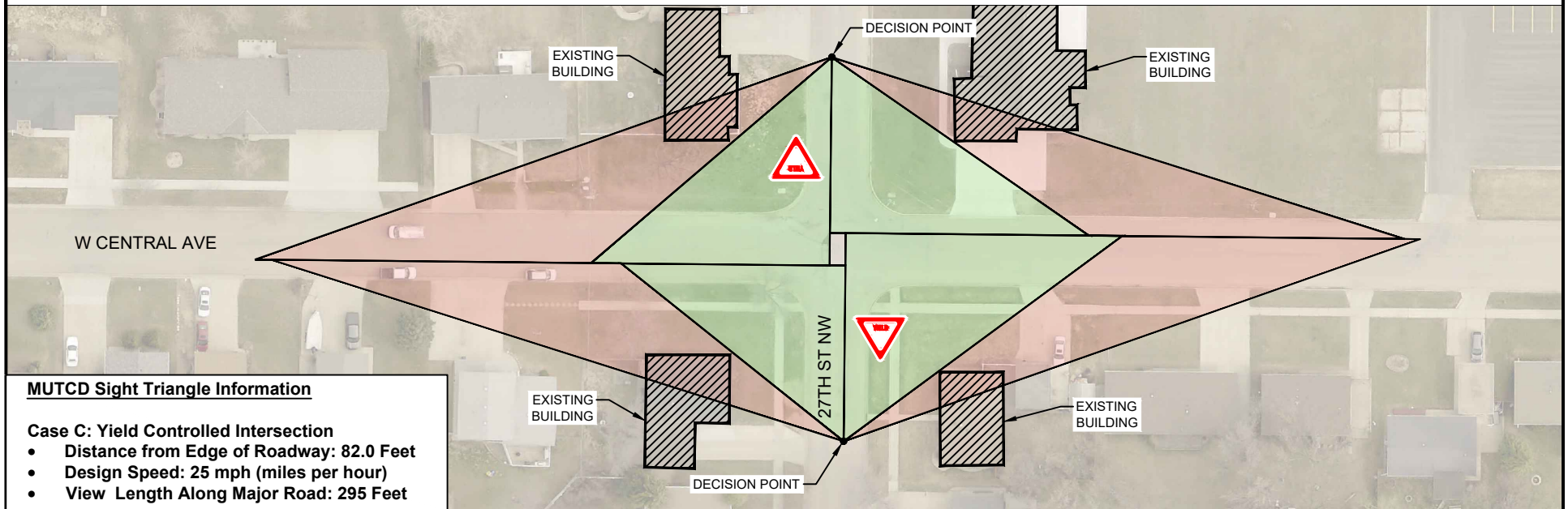
DEPARTURE SIGHT TRIANGLE FOR YIELD AND STOP CONDITIONS

25TH ST NW @ W CENTRAL AVE

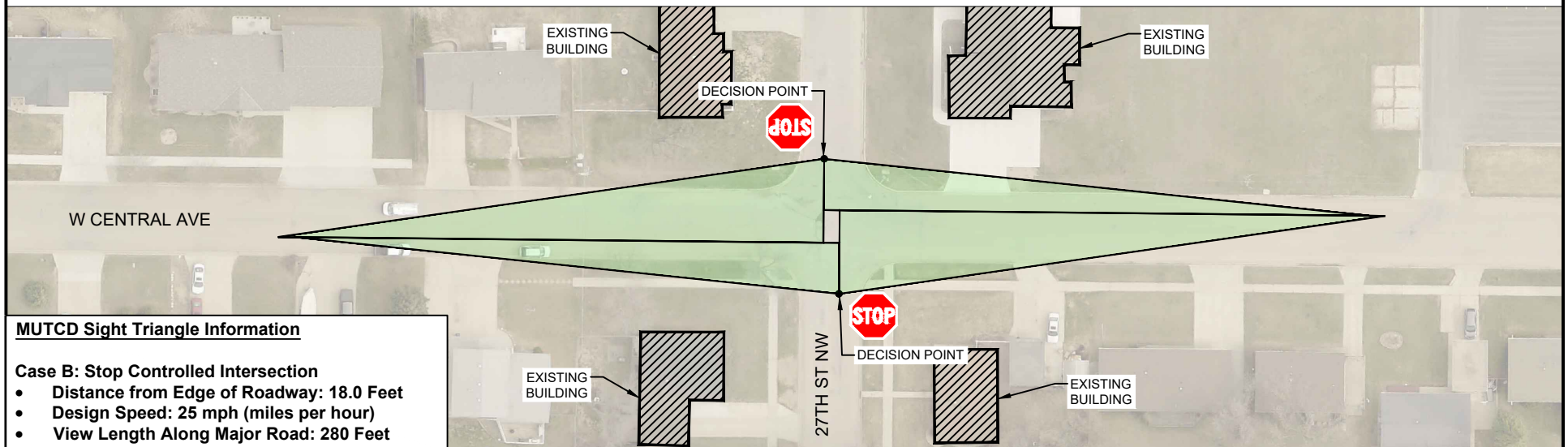
DATE DRAWN: 01/30/2024

City of Minot

CONDITION: APPROACH YIELD CONTROL



CONDITION: DEPARTURE STOP CONTROL



Legend

- Sight Triangle Obstructed View
- Sight Triangle Available View

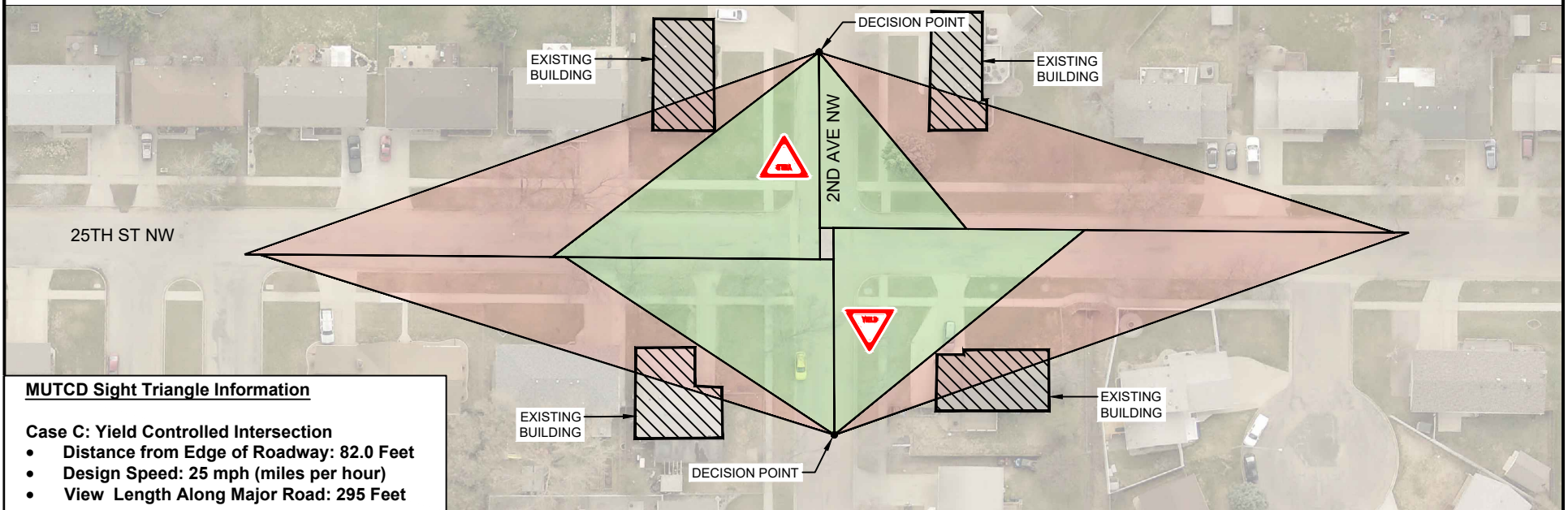
**DEPARTURE SIGHT TRIANGLE
FOR YIELD AND STOP CONDITIONS**

27TH ST NW @ W CENTRAL AVE

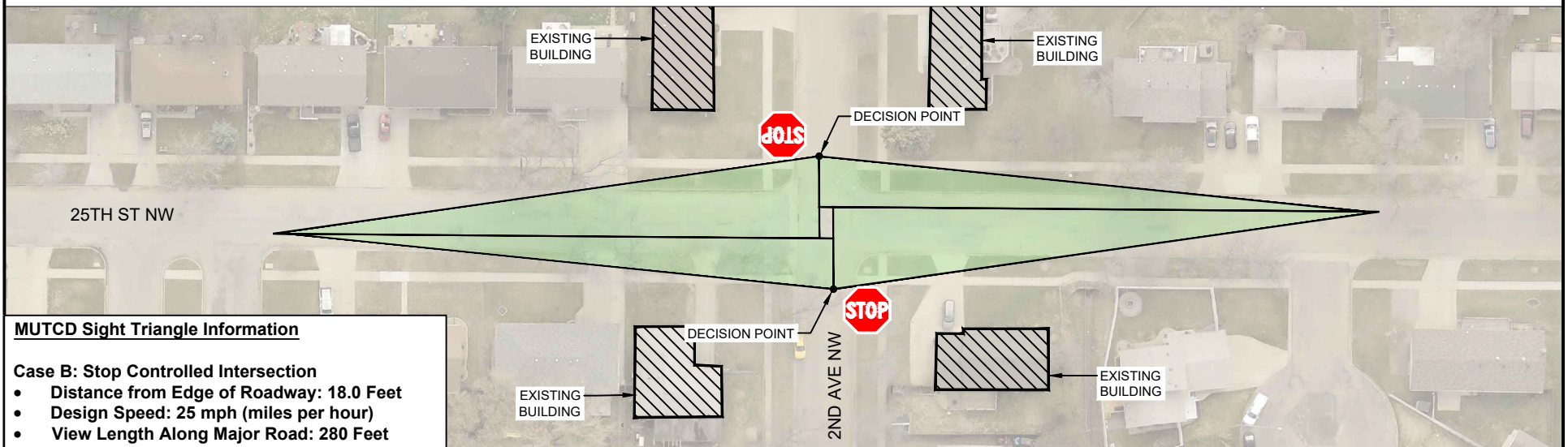
DATE DRAWN: 01/30/2024

City of Minot

CONDITION: APPROACH YIELD CONTROL



CONDITION: DEPARTURE STOP CONTROL



Legend

- Sight Triangle Obstructed View
- Sight Triangle Available View

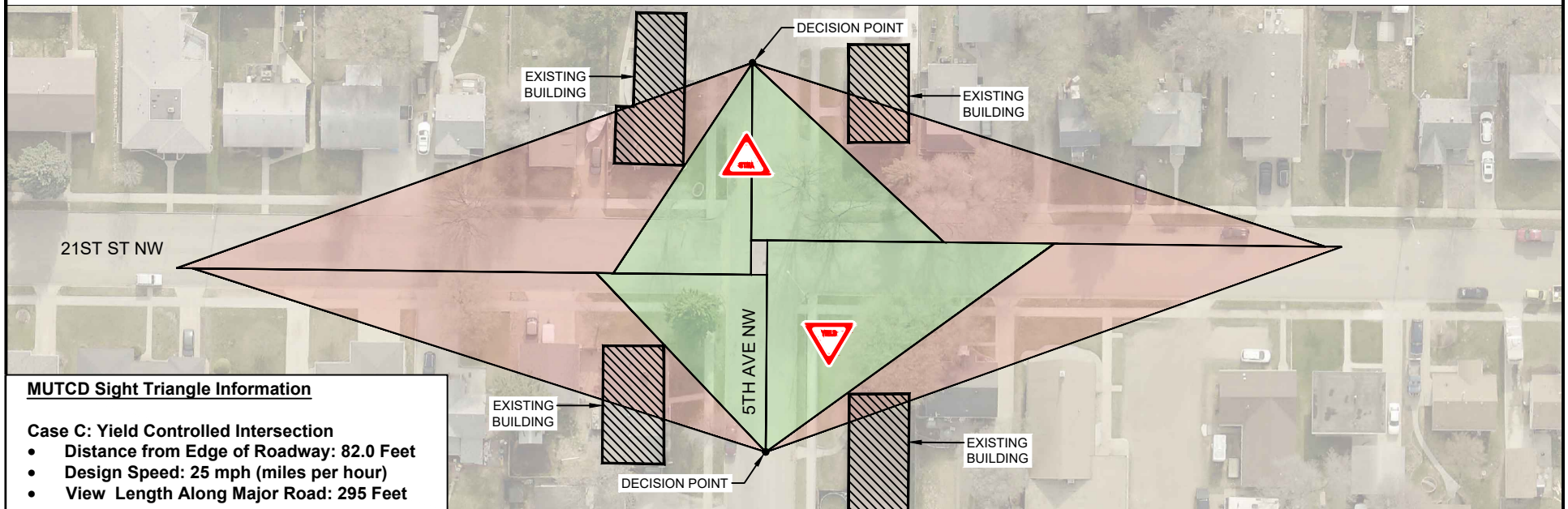
**DEPARTURE SIGHT TRIANGLE
FOR YIELD AND STOP CONDITIONS**

2ND AVE NW @ 25TH ST NW

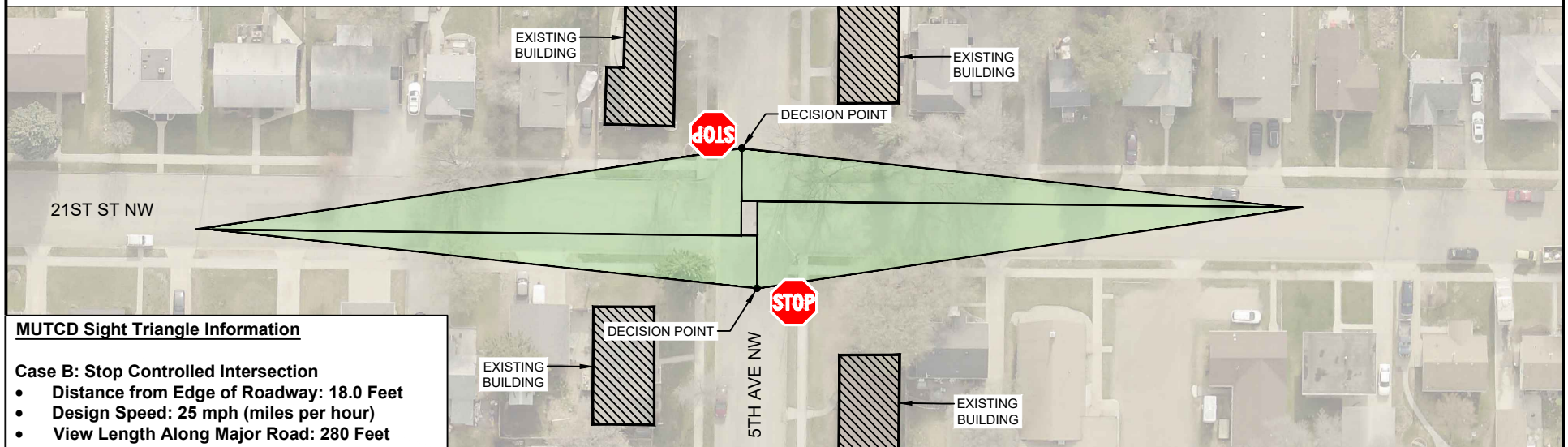
DATE DRAWN: 02/20/2024

City of Minot

CONDITION: APPROACH YIELD CONTROL



CONDITION: DEPARTURE STOP CONTROL



Legend

- Sight Triangle Obstructed View
- Sight Triangle Available View

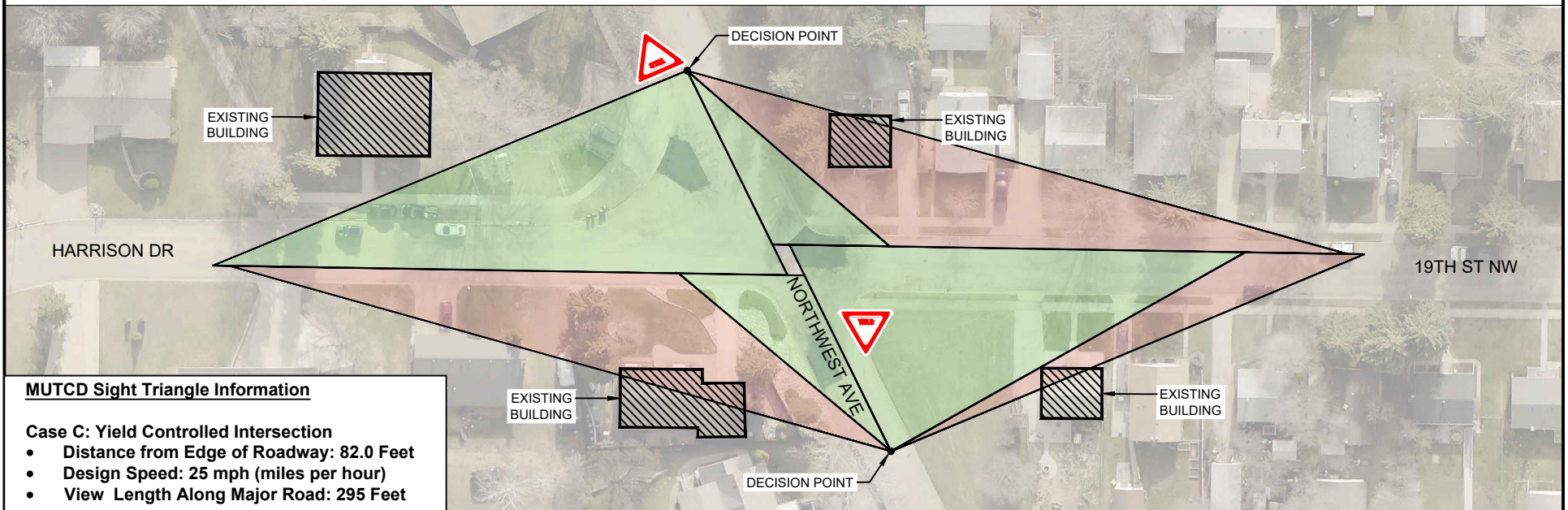
**DEPARTURE SIGHT TRIANGLE
FOR YIELD AND STOP CONDITIONS**

5TH AVE NW @ 21ST ST NW

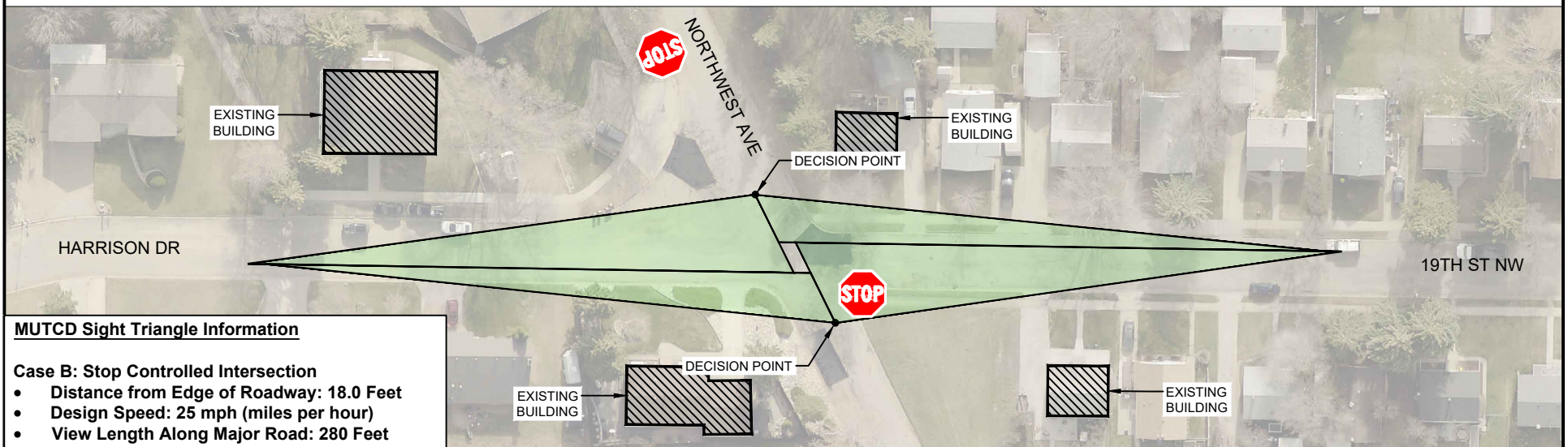
DATE DRAWN: 02/20/2024

City of Minot

CONDITION: APPROACH YIELD CONTROL



CONDITION: DEPARTURE STOP CONTROL



Legend

- Sight Triangle Obstructed View
- Sight Triangle Available View

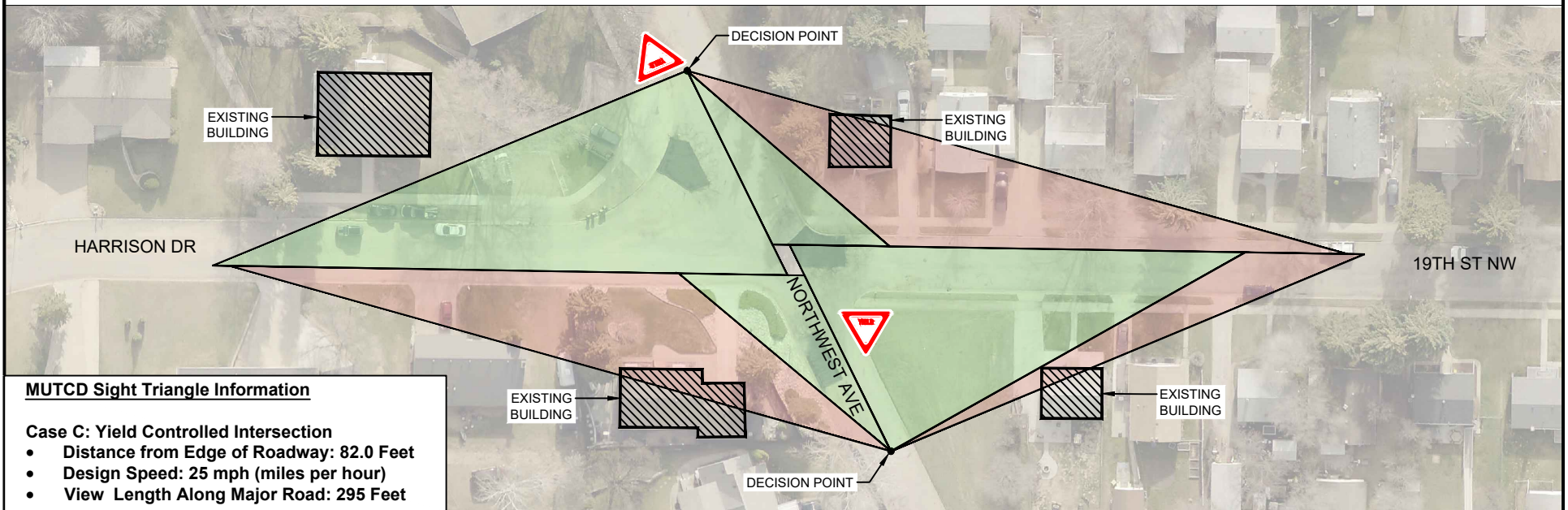
**DEPARTURE SIGHT TRIANGLE
FOR YIELD AND STOP CONDITIONS**

NORTHWEST AVE @ HARRISON DR

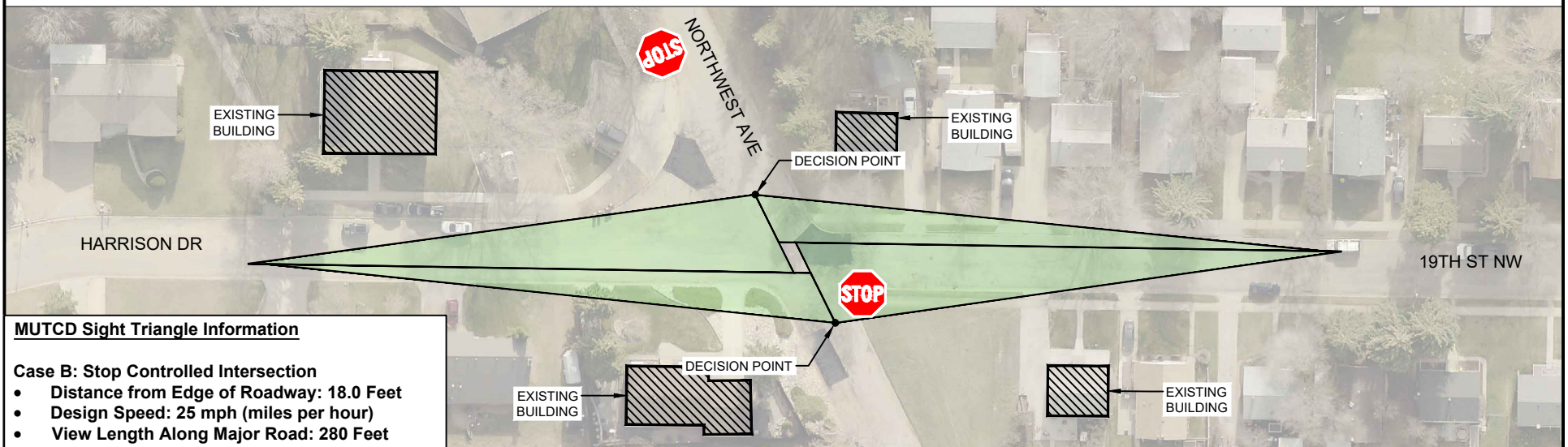
DATE DRAWN: 02/20/2024

City of Minot

CONDITION: APPROACH YIELD CONTROL



CONDITION: DEPARTURE STOP CONTROL



Legend

- Sight Triangle Obstructed View
- Sight Triangle Available View

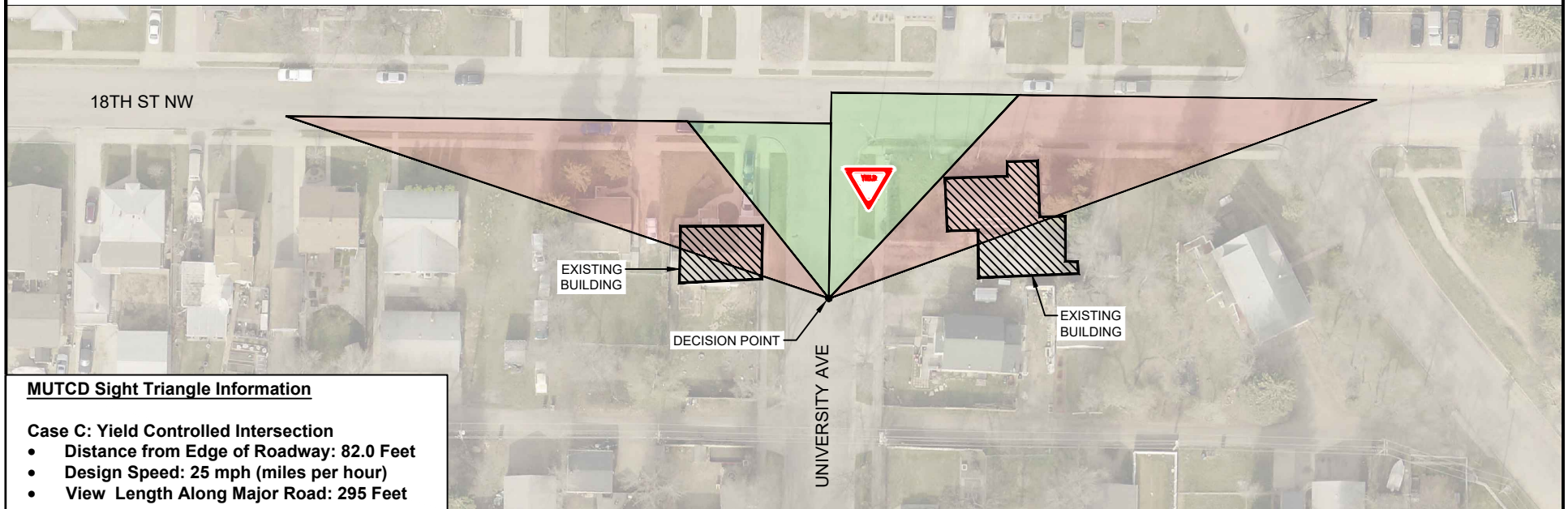
**DEPARTURE SIGHT TRIANGLE
FOR YIELD AND STOP CONDITIONS**

NORTHWEST AVE @ 19TH ST NW

DATE DRAWN: 02/20/2024

City of Minot

CONDITION: APPROACH YIELD CONTROL

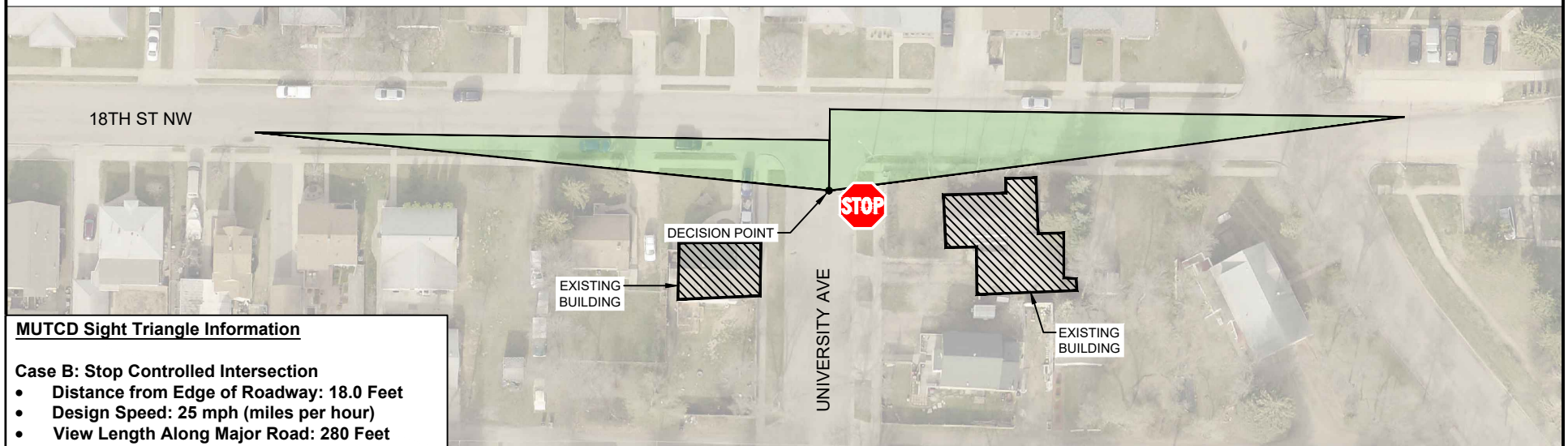


MUTCD Sight Triangle Information

Case C: Yield Controlled Intersection

- Distance from Edge of Roadway: 82.0 Feet
- Design Speed: 25 mph (miles per hour)
- View Length Along Major Road: 295 Feet

CONDITION: DEPARTURE STOP CONTROL



MUTCD Sight Triangle Information

Case B: Stop Controlled Intersection

- Distance from Edge of Roadway: 18.0 Feet
- Design Speed: 25 mph (miles per hour)
- View Length Along Major Road: 280 Feet



Legend

- Sight Triangle Obstructed View
- Sight Triangle Available View

**DEPARTURE SIGHT TRIANGLE
FOR YIELD AND STOP CONDITIONS**

UNIVERSITY AVE @ 18TH ST NW

DATE DRAWN: 02/20/2024

City of Minot