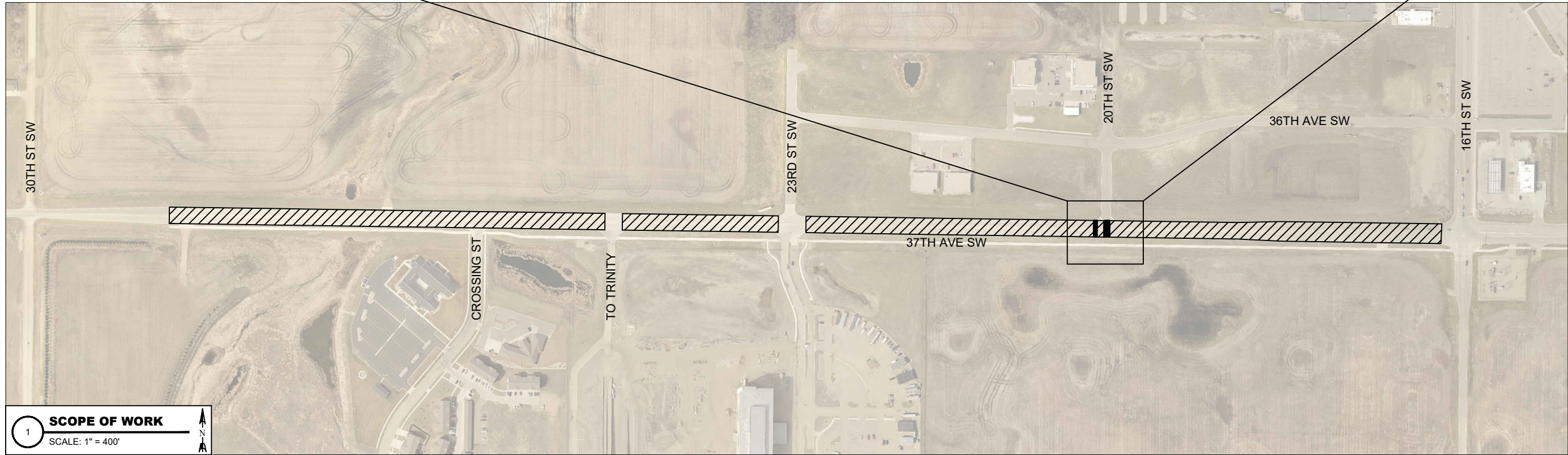


P:\PROJECTS\4807 - 2024 Concrete Pavement Rehab\Design\Plans\4807 - 2024 Concrete Pavement Rehab.dwg-SOW & PLAN-2/16/2024 9:48 AM-(jesse.hoffart)



1

SCOPE OF WORK

SCALE: 1" = 400'

N

↑

LEGEND



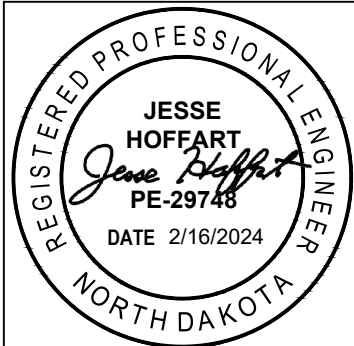
CONCRETE JOINT REPAIR & CRACK SEAL



PARTIAL-DEPTH AND FULL-DEPTH CONCRETE PAVEMENT REPAIR

NOTES:

- WORK ZONES SHOWN ABOVE HAVE NOT BEEN CLOSELY SURVEYED. REPAIR AREAS MAY BE LARGER OR SMALLER THAN EXPECTED DUE TO DAMAGE OVER THE WINTER SEASON. FINAL REPAIR QUANTITIES AND AREAS WILL BE SURVEYED IN THE SPRING FOR MORE ACCURATE AMOUNTS OF WORK.
- ADDITIONAL FULL-DEPTH AND PARTIAL-DEPTH CONCRETE PAVEMENT REPAIR AREAS MAY BE MARKED IN THE FIELD THAT ARE NOT SHOWN ABOVE. THE REPAIR AREAS MAY ALSO BE SMALLER IN THE FIELD THAN SHOWN ABOVE.



Surveyed by	MK & JH	SHEET
Drawn by	JH	
Designed by	MK & JH	
Date	02/16/2024	
Project No.	4807	4 OF 16

2024 CONCRETE PAVEMENT REHAB
SCOPE OF WORK & PLAN

-	-	-	-	No.	Revision	-	-	-	-	Date	By
-	-	-	-	-	-	-	-	-	-	-	-
-	-	-	-	-	-	-	-	-	-	-	-
-	-	-	-	-	-	-	-	-	-	-	-